

EN1 RABBIT PAB

Cat.#: S221953

Product Name: Anti-EN1 Rabbit Polyclonal Antibody

Synonyms:

UNIPROT ID: Q05925 (Gene Accession - NP_001417)

Background: Homeobox-containing genes are thought to have a role in controlling development. In *Drosophila*, the 'engrailed' (*en*) gene plays an important role during development in segmentation, where it is required for the formation of posterior compartments. Different mutations in the mouse homologs, *En1* and *En2*, produced different developmental defects that frequently are lethal. The human engrailed homologs 1 and 2 encode homeodomain-containing proteins and have been implicated in the control of pattern formation during development of the central nervous system.

Immunogen: Synthetic peptide of human EN1

Applications: ELISA, WB, IHC

Recommended Dilutions: IHC: 20-100;WB: 500-2000;ELISA: 5000-10000

Host Species: Rabbit

Clonality: Rabbit Polyclonal

Isotype: Immunogen-specific rabbit IgG

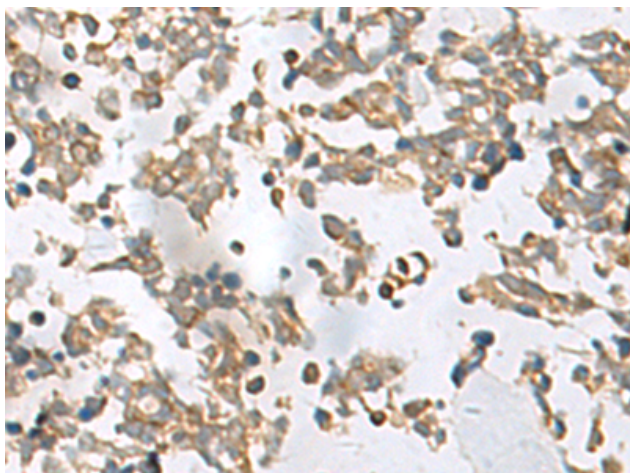
Purification: Antigen affinity purification

Species Reactivity: Human, Mouse

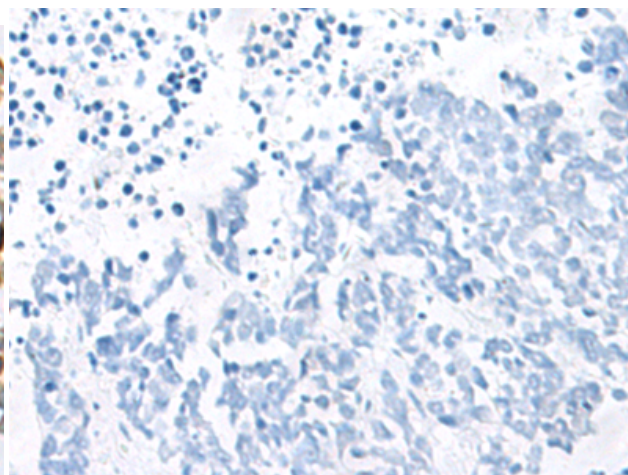
Constituents: PBS (without Mg²⁺ and Ca²⁺), pH 7.4, 150 mM NaCl, 0.05% Sodium Azide and 40% glycerol

Research Areas: Epigenetics and Nuclear Signaling, Neuroscience, Signal Transduction

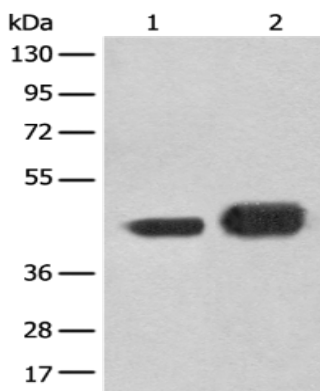
Storage & Shipping: Store at -20°C. Avoid repeated freezing and thawing



Immunohistochemistry analysis of paraffin embedded Human lung cancer tissue using 221953(ENI Antibody) at a dilution of 1/20(Nucleus).



In comparison with the IHC on the left, the same paraffin-embedded Human lung cancer tissue is first treated with the synthetic peptide and then with 221953(Anti-ENI Antibody) at dilution 1/20.



Gel: 8%SDS-PAGE, Lysate: 40 μ g;
 Lane 1-2: A172 and HEPG2 cell lysates;
 Primary antibody: 221953(ENI Antibody) at dilution 1/300;
 Secondary antibody: Goat anti rabbit IgG at 1/8000 dilution;
 Exposure time: 5 seconds