

ELOVL1 RABBIT PAB

Cat.#: S217400

Product Name: Anti-ELOVL1 Rabbit Polyclonal Antibody

Synonyms: Ssc1; IKSHD; CGI-88

UNIPROT ID: Q9BW60 (Gene Accession - BC000618)

Background: Enables fatty acid elongase activity. Involved in fatty acid biosynthetic process and sphingolipid biosynthetic process. Located in endoplasmic reticulum.

Immunogen: Fusion protein of human ELOVL1

Applications: ELISA, WB, IHC

Recommended Dilutions: IHC: 50-200;WB: 1000-5000;ELISA: 5000-10000

Host Species: Rabbit

Clonality: Rabbit Polyclonal

Isotype: Immunogen-specific rabbit IgG

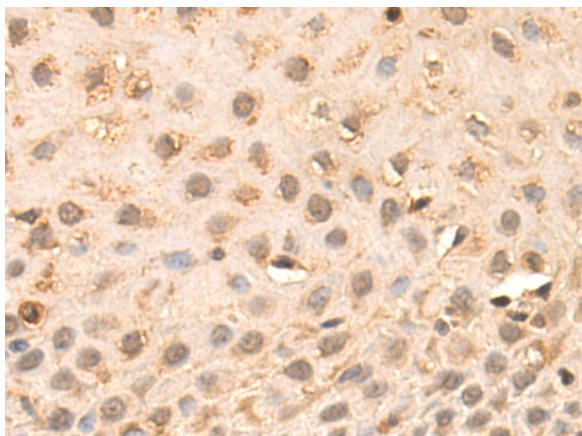
Purification: Antigen affinity purification

Species Reactivity: Human, Mouse

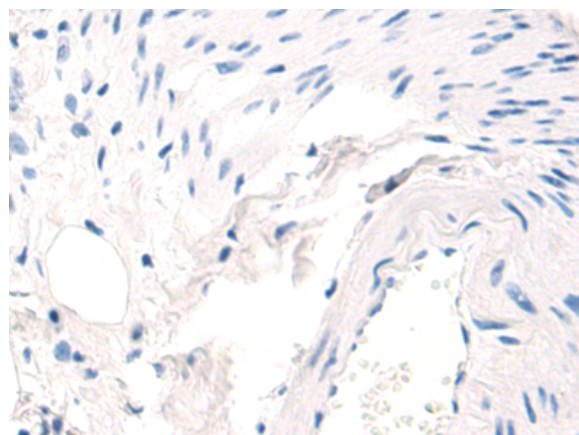
Constituents: PBS (without Mg²⁺ and Ca²⁺), pH 7.4, 150 mM NaCl, 0.05% Sodium Azide and 40% glycerol

Research Areas: Metabolism, Cardiovascular

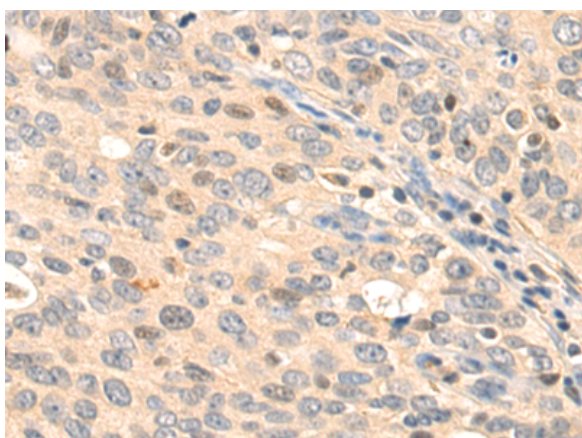
Storage & Shipping: Store at -20°C. Avoid repeated freezing and thawing



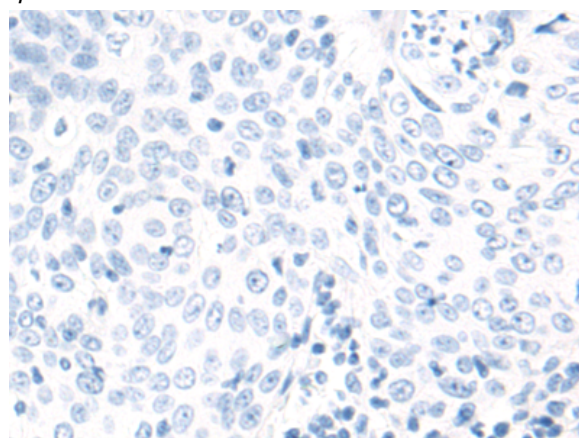
Immunohistochemistry analysis of paraffin embedded Human esophagus cancer tissue using 217400 (ELOVL1 Antibody) at a dilution of 1/70 (Cytoplasm and Nucleus).



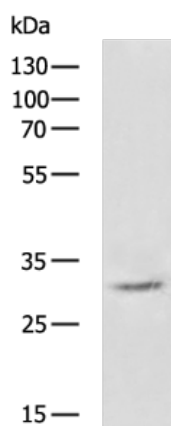
In comparison with the IHC on the left, the same paraffin-embedded Human esophagus cancer tissue is first treated with the fusion protein and then with 217400 (Anti-ELOVL1 Antibody) at dilution 1/70.



The image on the left is immunohistochemistry of paraffin-embedded Human cervical cancer tissue using 217400 (Anti-ELOVL1 Antibody) at a dilution of 1/70.



In comparison with the IHC on the left, the same paraffin-embedded Human cervical cancer tissue is first treated with fusion protein and then with D222292 (Anti-ELOVL1 Antibody) at dilution 1/70.



Gel: 8%SDS-PAGE, Lysate:40 µg;
Lane: Mouse brain tissue lysates;
Primary antibody: 217400 (ELOVL1 Antibody) at dilution 1/1000;
Secondary antibody: HRP-conjugated Goat anti rabbit IgG at 1/5000 dilution;
Exposure time: 40 seconds



Product Description

Pioneering GTPase and Oncogene Product Development since 2010
