

## ELONGATION FACTOR 1A2 BINDING PROTEIN RABBIT PAB

**Cat.#:** N225534

**Product Name:** Anti-Elongation Factor 1A2 Binding Protein Rabbit pAb

**Synonyms:** IGFN1 antibody; immunoglobulin-like and fibronectin type III domain containing 1 antibody; EEF1A2BP1 antibody

**UNIPROT ID:** Q86VF2

**Background:** Predicted to be involved in homophilic cell adhesion via plasma membrane adhesion molecules; retina layer formation; and synapse assembly. Predicted to be located in Z disc and nucleus. Predicted to be active in synapse.

**Immunogen:** Recombinant Protein of IGFN1

**Applications:** WB,IHC-P

**Recommended Dilutions:** WB: 1/500-1/1000 IHC: 1/50-1/100

**Host Species:** Rabbit

**Clonality:** Rabbit Polyclonal

**Clone ID:** -

**MW:** Calculated MW: 138 kDa; Observed MW: 115 kDa

**Isotype:** IgG

**Purification:** Affinity Purified

**Species Reactivity:** Human,Mouse,Rat

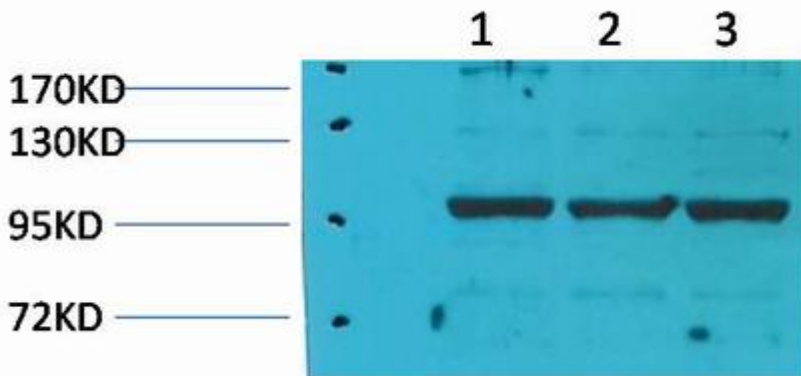
**Conjugation:** Unconjugated

**Modification:** Unmodified

**Constituents:** PBS (without Mg<sup>2+</sup> and Ca<sup>2+</sup>), pH 7.3 containing 50% glycerol, 0.5% BSA and 0.02% sodium azide

**Research Areas:** Epigenetics and Nuclear Signaling

**Storage & Shipping:** Store at -20°C. Avoid repeated freezing and thawing



Western blot analysis of Elongation Factor 1A2 Binding Protein in Pig Skeletal Muscle, rat Skeletal Muscle, rat Skeletal Muscle lysates using eEF1A2 antibody.