

ELONGATION FACTOR 1A1 RABBIT MAB

Cat.#: N262154

Product Name: Anti-Elongation Factor 1A1 Rabbit Monoclonal Antibody

Synonyms: EEF1A1; CCS-3; CCS3; EEF-1; EEF1A; EF-Tu; EF1A; GRAF-1EF; LENG7; PTII; eEF1A-1

UNIPROT ID: P68104

Background: This protein promotes the GTP-dependent binding of aminoacyl-tRNA to the A-site of ribosomes during protein biosynthesis.

Immunogen: A synthetic peptide of human eEF1A1

Applications: WB,IHC-P,IP

Recommended Dilutions: WB: 1/500-1/1000 IHC: 1/50-1/100 IP: 1/20

Host Species: Rabbit

Clonality: Rabbit Monoclonal

Clone ID: R05-4K5

MW: Calculated MW: 50 kDa; Observed MW: 50 kDa

Isotype: IgG

Purification: Affinity Purified

Species Reactivity: Human,Mouse,Rat

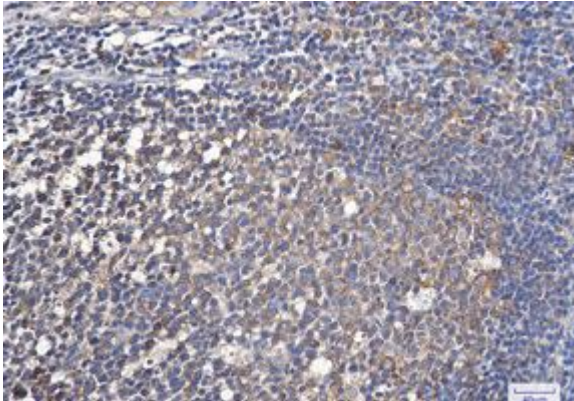
Conjugation: Unconjugated

Modification: Unmodified

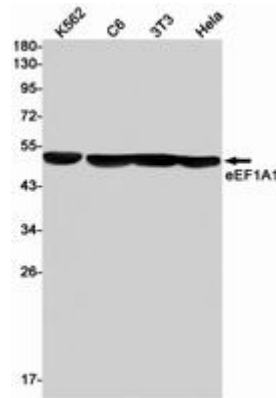
Constituents: PBS (without Mg²⁺ and Ca²⁺), pH 7.3 containing 50% glycerol, 0.5% BSA and 0.02% sodium azide

Research Areas: Epigenetics and Nuclear Signaling

Storage & Shipping: Store at -20°C. Avoid repeated freezing and thawing



Immunohistochemistry analysis of paraffin-embedded Human tonsil using eEF1A1 antibody. High-pressure and temperature Sodium Citrate pH 6.0 was used for antigen retrieval.



Western blot analysis of eEF1A1 in K562, C6, 3T3, HeLa lysates using Elongation Factor 1A1 antibody.