

ELONGATION FACTOR 1A1 RABBIT MAB

Cat.#: N263308

Product Name: Anti-Elongation Factor 1A1 Rabbit Monoclonal Antibody

Synonyms: EEF1A1; CCS-3; CCS3; EEF-1; EEF1A; EF-Tu; EF1A; GRAF-1EF; LENG7; PTII; eEF1A-1

UNIPROT ID: P68104

Background: This protein promotes the GTP-dependent binding of aminoacyl-tRNA to the A-site of ribosomes during protein biosynthesis.

Immunogen: A synthetic peptide of human eEF1A1/EF-Tu

Applications: WB,IHC-F,IHC-P,ICC/IF

Recommended Dilutions: WB: 1/500-1/1000 IHC: 1/50-1/100 IF: 1/50-1/200

Host Species: Rabbit

Clonality: Rabbit Monoclonal

Clone ID: R04-3H4

MW: Calculated MW: 50 kDa; Observed MW: 50 kDa

Isotype: IgG

Purification: Affinity Purified

Species Reactivity: Human,Rat

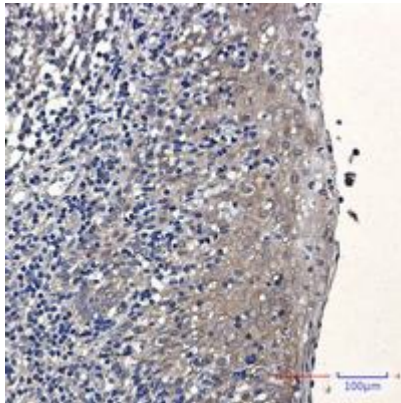
Conjugation: Unconjugated

Modification: Unmodified

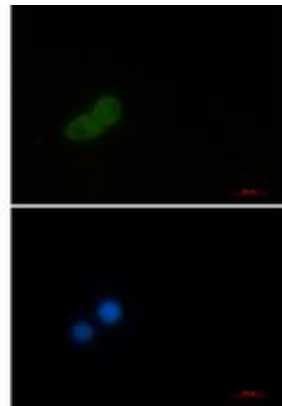
Constituents: PBS (without Mg²⁺ and Ca²⁺), pH 7.3 containing 50% glycerol, 0.5% BSA and 0.02% sodium azide

Research Areas: Epigenetics and Nuclear Signaling

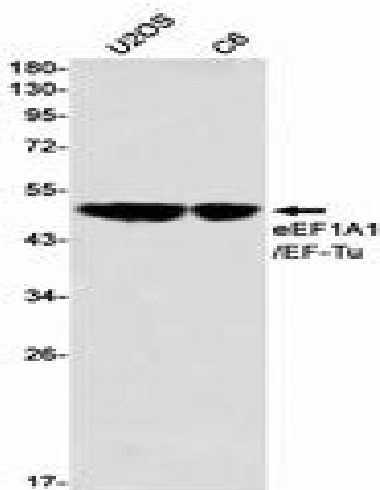
Storage & Shipping: Store at -20°C. Avoid repeated freezing and thawing



Immunohistochemistry analysis of paraffin-embedded Human tonsil using eEF1A1/EFTu antibody. High-pressure and temperature Sodium Citrate pH 6.0 was used for antigen retrieval.



Immunocytochemistry analysis of Elongation Factor 1A1 (green) in HeLa using Elongation Factor 1A1 antibody, and DAPI (blue).



Western blot analysis of eEF1A1/EFTu in U2OS, C6 lysates using eEF1A1/EFTu antibody.