

## ELAC1 RABBIT PAB

**Cat.#:** S219083

**Product Name:** Anti-ELAC1 Rabbit Polyclonal Antibody

**Synonyms:** D29

**UNIPROT ID:** Q9H777 (Gene Accession - BC014624 )

**Background:** Zinc phosphodiesterase, which displays some tRNA 3'-processing endonuclease activity. Probably involved in tRNA maturation, by removing a 3'-trailer from precursor tRNA.

**Immunogen:** Fusion protein of human ELAC1

**Applications:** ELISA, IHC

**Recommended Dilutions:** IHC: 50-300; ELISA: 5000-10000

**Host Species:** Rabbit

**Clonality:** Rabbit Polyclonal

**Isotype:** Immunogen-specific rabbit IgG

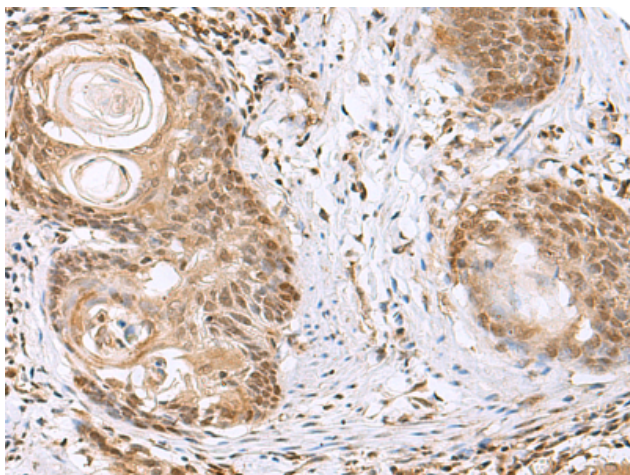
**Purification:** Antigen affinity purification

**Species Reactivity:** Human, Mouse

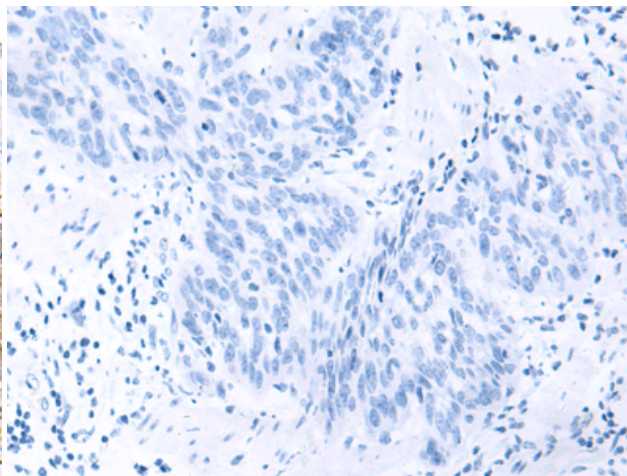
**Constituents:** PBS (without Mg<sup>2+</sup> and Ca<sup>2+</sup>), pH 7.4, 150 mM NaCl, 0.05% Sodium Azide and 40% glycerol

**Research Areas:** Epigenetics and Nuclear Signaling

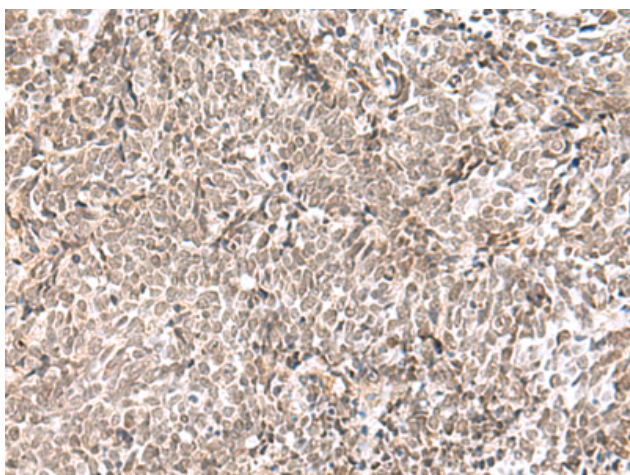
**Storage & Shipping:** Store at -20°C. Avoid repeated freezing and thawing



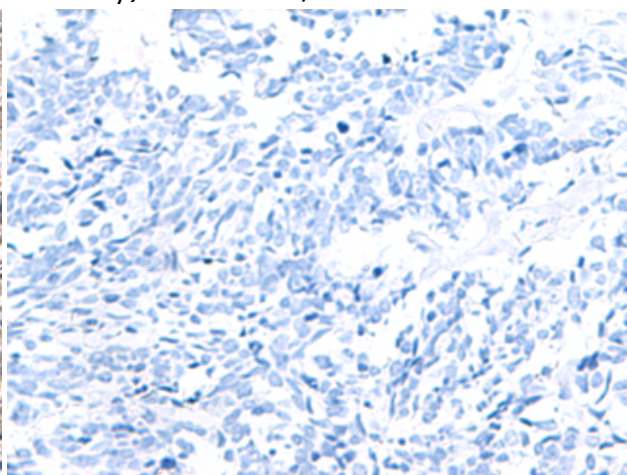
Immunohistochemistry analysis of paraffin embedded Human esophagus cancer tissue using 219083(ELAC1 Antibody) at a dilution of 1/65(Nucleus).



In comparison with the IHC on the left, the same paraffin-embedded Human esophagus cancer tissue is first treated with the fusion protein and then with 219083(Anti-ELAC1 Antibody) at dilution 1/65.



The image on the left is immunohistochemistry of paraffin-embedded Human lung cancer tissue using 219083(Anti-ELAC1 Antibody) at a dilution of 1/65.



In comparison with the IHC on the left, the same paraffin-embedded Human lung cancer tissue is first treated with fusion protein and then with D225800(Anti-ELAC1 Antibody) at dilution 1/65.