

EIF5 RABBIT PAB

Cat.#: S217393

Product Name: Anti-EIF5 Rabbit Polyclonal Antibody

Synonyms: EIF-5; EIF-5A

UNIPROT ID: P55010 (Gene Accession - BC007728)

Background: Eukaryotic translation initiation factor-5 (EIF5) interacts with the 40S initiation complex to promote hydrolysis of bound GTP with concomitant joining of the 60S ribosomal subunit to the 40S initiation complex. The resulting functional 80S ribosomal initiation complex is then active in peptidyl transfer and chain elongations

Immunogen: Fusion protein of human EIF5

Applications: ELISA, IHC

Recommended Dilutions: IHC: 25-100; ELISA: 1000-2000

Host Species: Rabbit

Clonality: Rabbit Polyclonal

Isotype: Immunogen-specific rabbit IgG

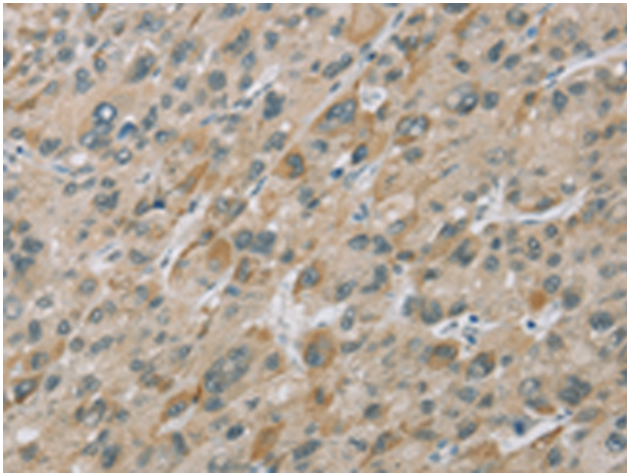
Purification: Antigen affinity purification

Species Reactivity: Human, Mouse, Rat

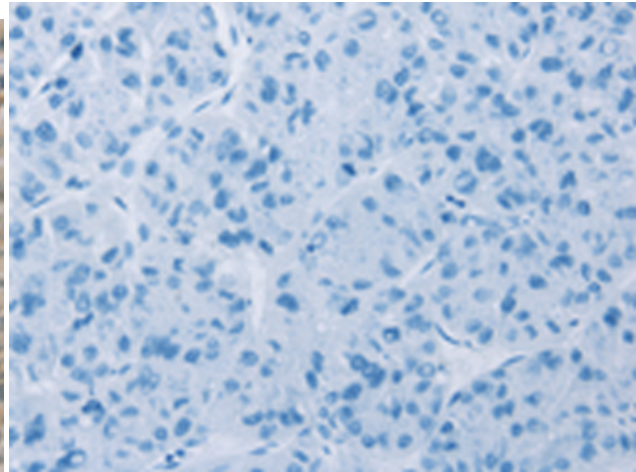
Constituents: PBS (without Mg²⁺ and Ca²⁺), pH 7.4, 150 mM NaCl, 0.05% Sodium Azide and 40% glycerol

Research Areas: Epigenetics and Nuclear Signaling

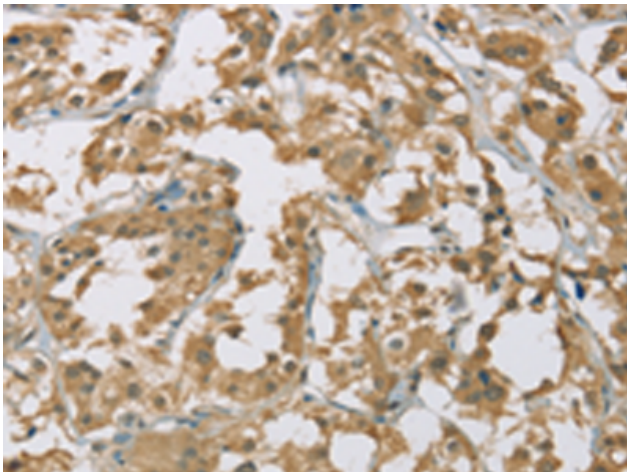
Storage & Shipping: Store at -20°C. Avoid repeated freezing and thawing



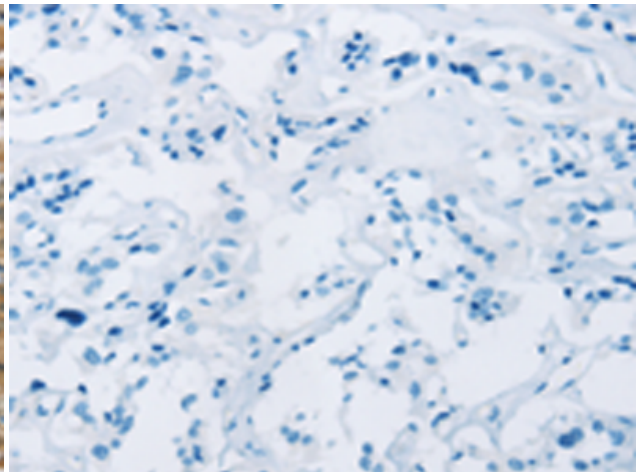
Immunohistochemistry analysis of paraffin embedded Human liver cancer tissue using 217393(EIF5 Antibody) at a dilution of 1/25(Cytoplasm).



In comparison with the IHC on the left, the same paraffin-embedded Human liver cancer tissue is first treated with the fusion protein and then with 217393(Anti-EIF5 Antibody) at dilution 1/25.



The image on the left is immunohistochemistry of paraffin-embedded Human thyroid cancer tissue using 217393(Anti-EIF5 Antibody) at a dilution of 1/25.



In comparison with the IHC on the left, the same paraffin-embedded Human thyroid cancer tissue is first treated with fusion protein and then with D222283(Anti-EIF5 Antibody) at dilution 1/25.