

## EIF4G1 RABBIT PAB

**Cat.#:** N225280

**Product Name:** Anti-eIF4G1 Rabbit pAb

**Synonyms:** p220

**UNIPROT ID:** Q04637

**Background:** Component of the protein complex eIF4F, which is involved in the recognition of the mRNA cap, ATP-dependent unwinding of 5'-terminal secondary structure and recruitment of mRNA to the ribosome.

**Immunogen:** Peptide sequence around aa.1230~1234 (P-V-S-P-L) derived from Human eIF4G.

**Applications:** WB,IHC-P,ICC/IF

**Recommended Dilutions:** WB: 1/500-1/1000 IHC: 1/50-1/100 IF: 1/50-1/200

**Host Species:** Rabbit

**Clonality:** Rabbit Polyclonal

**Clone ID:** -

**MW:** Calculated MW: 175 kDa; Observed MW: 220 kDa

**Isotype:** IgG

**Purification:** Affinity Chromatography

**Species Reactivity:** Human

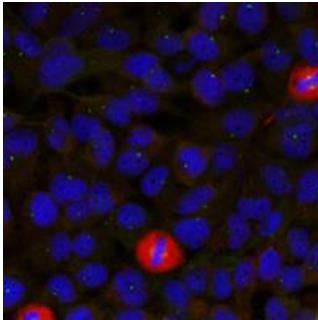
**Conjugation:** Unconjugated

**Modification:** Unmodified

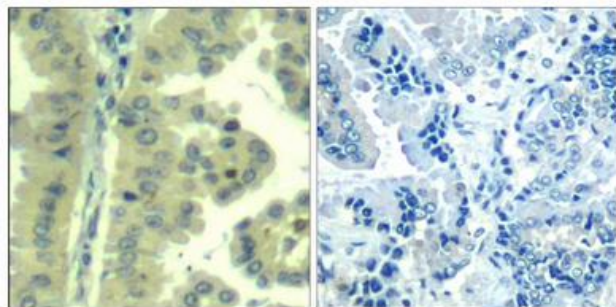
**Constituents:** PBS (without Mg<sup>2+</sup> and Ca<sup>2+</sup>), pH 7.3 containing 50% glycerol, 0.5% BSA and 0.02% sodium azide

**Research Areas:** Epigenetics and Nuclear Signaling

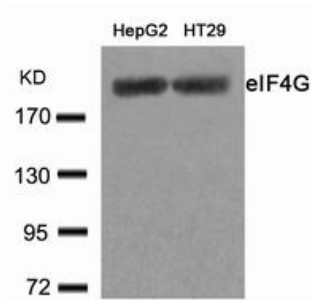
**Storage & Shipping:** Store at -20°C. Avoid repeated freezing and thawing



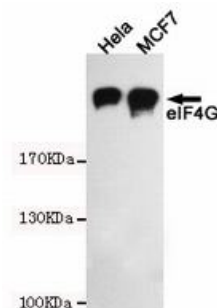
Immunofluorescence analysis of eIF4G1 in HeLa using eIF4G (Ab1232) antibody.



Immunohistochemistry analysis of paraffin-embedded Human lung carcinoma tissue using eIF4G (Ab1232) antibody (left) or the same antibody preincubated with blocking peptide (right). High-pressure and temperature Sodium Citrate pH 6.0 was used for antigen retrieval.



Western blot analysis of eIF4G1 in HepG2 and HT-29 lysates using eIF4G (Ab1232) antibody.



Western blot analysis of eIF4G1 in HeLa and MCF-7 lysates using eIF4G1 antibody