

EIF4E RABBIT MAB

Cat.#: N262170

Product Name: Anti-eIF4E Rabbit Monoclonal Antibody

Synonyms: EIF4E; EIF4EL1; EIF4F; Eukaryotic translation initiation factor 4E; eIF-4E; eIF4E; eIF-4F 25 kDa subunit; mRNA cap-binding protein

UNIPROT ID: P06730

Background: eIF4E, a protein modulates translation of maternal mRNAs in early embryos before the onset of zygotic transcription. eIF4E also influences the overall rate of translation. eIF4E binds to the 7 methyl GTP cap structure of eukaryotic mRNAs. Phosphorylation of eIF4E on serine 209 regulates the affinity of this protein for the 7 methyl GTP cap and/or RNA. Phosphorylation also enhances the interaction of eIF4E with eIF4G, which form a complex known as eIF4F. eIF4E phosphorylation is correlated with increased translational rate in a number of cell types.

Immunogen: A synthetic peptide of human eIF4E

Applications: WB, ICC/IF, IP

Recommended Dilutions: WB: 1/500-1/1000 IF: 1/50-1/200 IP: 1/20

Host Species: Rabbit

Clonality: Rabbit Monoclonal

Clone ID: R08-1C5

MW: Calculated MW: 25 kDa; Observed MW: 25 kDa

Isotype: IgG

Purification: Affinity Purified

Species Reactivity: Human, Mouse, Rat

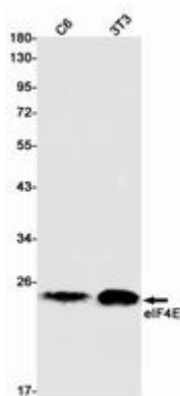
Conjugation: Unconjugated

Modification: Unmodified

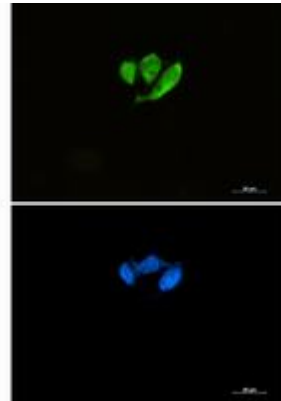
Constituents: PBS (without Mg²⁺ and Ca²⁺), pH 7.3 containing 50% glycerol, 0.5% BSA and 0.02% sodium azide

Research Areas: Hypoxia Signal Transduction yyyyyy Hypoxia-induced

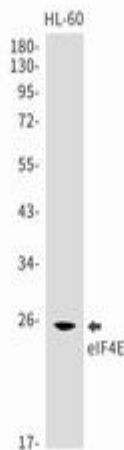
Storage & Shipping: Store at -20°C. Avoid repeated freezing and thawing



Western blot analysis of eIF4E in C6, 3T3 lysates using eIF4E antibody



Immunocytochemistry analysis of eIF4E (green) in HCT116 using eIF4E antibody, and DAPI (blue).



Western blot analysis of eIF4E in HL-60 lysates using eIF4E antibody.