

EIF4A2 RABBIT PAB

Cat.#: S219232

Product Name: Anti-EIF4A2 Rabbit Polyclonal Antibody

Synonyms: DDX2B; EIF4A; EIF4F; BM-010; eIF4A-II; eIF-4A-II

UNIPROT ID: Q14240 (Gene Accession - BC016295)

Background: ATP-dependent RNA helicase which is a subunit of the eIF4F complex involved in cap recognition and is required for mRNA binding to ribosome. In the current model of translation initiation, eIF4A unwinds RNA secondary structures in the 5'-UTR of mRNAs which is necessary to allow efficient binding of the small ribosomal subunit, and subsequent scanning for the initiator codon.

Immunogen: Fusion protein of human EIF4A2

Applications: ELISA, IHC

Recommended Dilutions: IHC: 50-200; ELISA: 5000-10000

Host Species: Rabbit

Clonality: Rabbit Polyclonal

Isotype: Immunogen-specific rabbit IgG

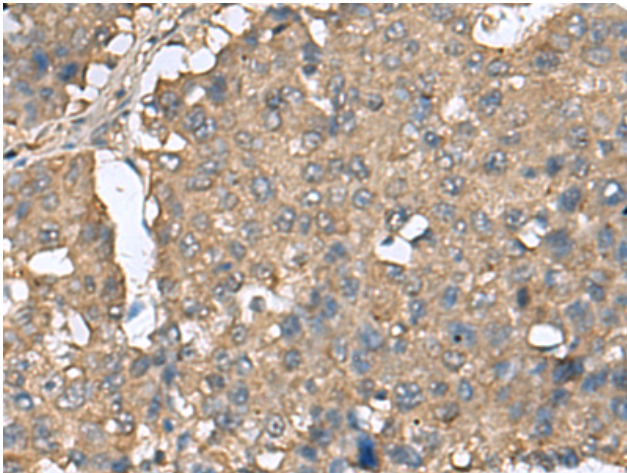
Purification: Antigen affinity purification

Species Reactivity: Human, Mouse, Rat

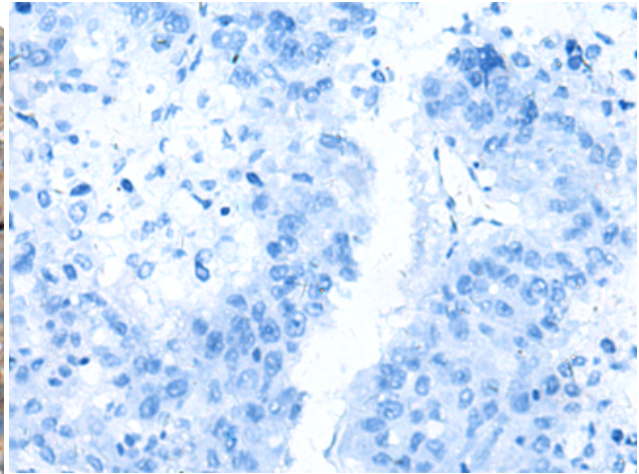
Constituents: PBS (without Mg²⁺ and Ca²⁺), pH 7.4, 150 mM NaCl, 0.05% Sodium Azide and 40% glycerol

Research Areas: Epigenetics and Nuclear Signaling

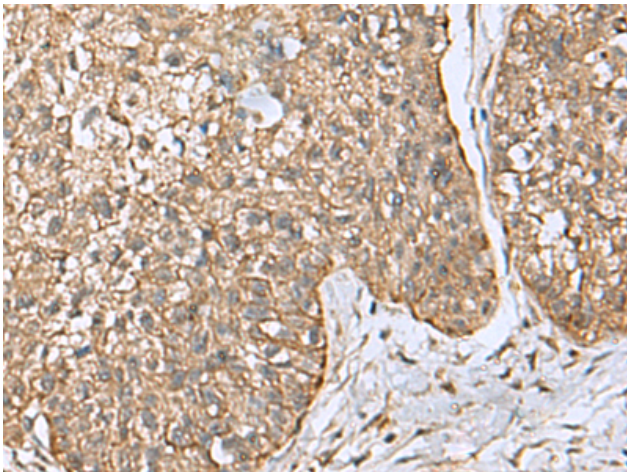
Storage & Shipping: Store at -20°C. Avoid repeated freezing and thawing



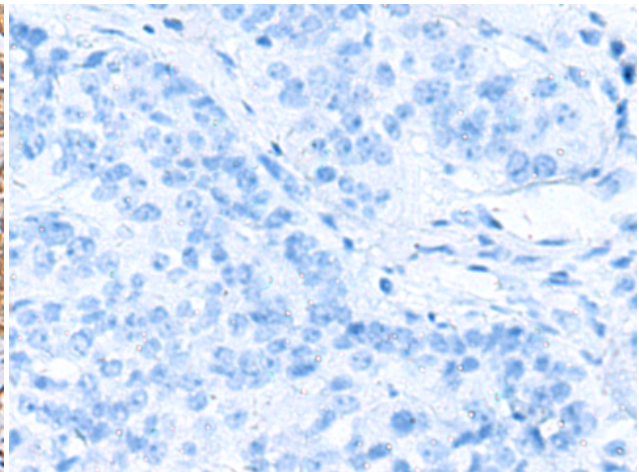
Immunohistochemistry analysis of paraffin embedded Human liver cancer tissue using 219232(EIF4A2 Antibody) at a dilution of 1/65(Cytoplasm).



In comparison with the IHC on the left, the same paraffin-embedded Human liver cancer tissue is first treated with the fusion protein and then with 219232(Anti-EIF4A2 Antibody) at dilution 1/65.



The image on the left is immunohistochemistry of paraffin-embedded Human esophagus cancer tissue using 219232(Anti-EIF4A2 Antibody) at a dilution of 1/65.



In comparison with the IHC on the left, the same paraffin-embedded Human esophagus cancer tissue is first treated with fusion protein and then with D226100(Anti-EIF4A2 Antibody) at dilution 1/65.