

## EIF4A1 (6D7) MOUSE MAB

**Cat.#:** N261248

**Product Name:** Anti-eIF4A1 (6D7) Mouse Monoclonal Antibody

**Synonyms:** Eukaryotic initiation factor 4A-I; eIF-4A-I; eIF4A-I; ATP-dependent RNA helicase eIF4A-1

**UNIPROT ID:** P60842

**Background:** ATP-dependent RNA helicase which is a subunit of the eIF4F complex involved in cap recognition and is required for mRNA binding to ribosome.

**Immunogen:** Synthetic Peptide of eIF4A1

**Applications:** WB,IHC-F,IHC-P,ICC/IF

**Recommended Dilutions:** WB: 1/500-1/1000 IHC: 1/50-1/100 IF: 1/50-1/200

**Host Species:** Mouse

**Clonality:** Mouse Monoclonal

**Clone ID:** 6D7-10D5-7H7

**MW:** Calculated MW: 46 kDa; Observed MW: 46 kDa

**Isotype:** IgG1

**Purification:** Affinity Purified

**Species Reactivity:** Human,Mouse,Rat

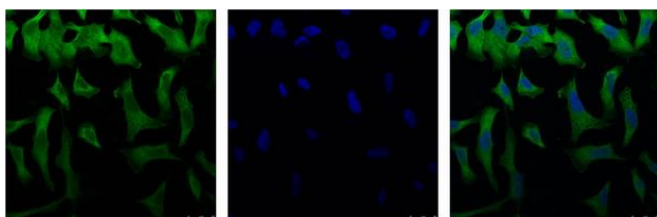
**Conjugation:** Unconjugated

**Modification:** Unmodified

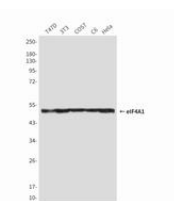
**Constituents:** PBS (without Mg<sup>2+</sup> and Ca<sup>2+</sup>), pH 7.3 containing 50% glycerol, 0.5% BSA and 0.02% sodium azide

**Research Areas:** Epigenetics and Nuclear Signaling

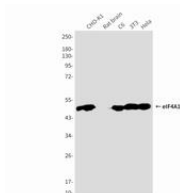
**Storage & Shipping:** Store at -20°C. Avoid repeated freezing and thawing



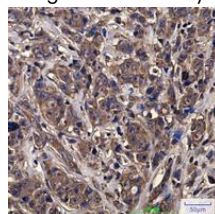
Immunofluorescence analysis of eIF4A1 (6D7) in HeLa using eIF4A1 (6D7) antibody (Left), and DAPI (blue)



Western blot analysis of eIF4A1 in T47D, 3T3, COS7, C6 and HeLa lysates using eIF4A1 antibody.



Western blot analysis of eIF4A1 (6D7) in CHO-K1, rat brain, C6, 3T3, HeLa lysates using eIF4A1 (6D7) antibody.



Immunohistochemistry analysis of paraffin-embedded Human breast cancer tissue using eIF4A1 (6D7) antibody. High-pressure and temperature Sodium Citrate pH 6.0 was used for antigen retrieval.