

## EIF3B RABBIT MAB

**Cat.#:** N262165

**Product Name:** Anti-eIF3B Rabbit Monoclonal Antibody

**Synonyms:** eIF3b; EIF3S9; hPrtI; PRT1

**UNIPROT ID:** P55884

**Background:** Component of the eukaryotic translation initiation factor 3 (eIF-3) complex, which is required for several steps in the initiation of protein synthesis.

**Immunogen:** A synthetic peptide of human eIF3B

**Applications:** WB,IHC-P

**Recommended Dilutions:** WB: 1/500-1/1000 IHC: 1/50-1/100

**Host Species:** Rabbit

**Clonality:** Rabbit Monoclonal

**Clone ID:** R09-2A9

**MW:** Calculated MW: 92 kDa; Observed MW: 117 kDa

**Isotype:** IgG

**Purification:** Affinity Purified

**Species Reactivity:** Human

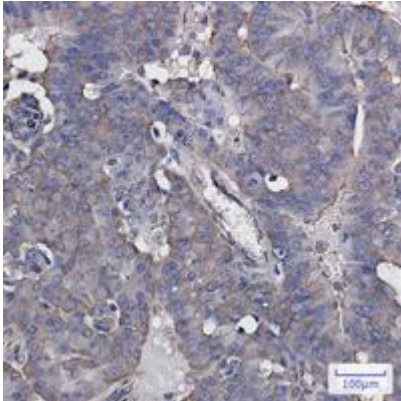
**Conjugation:** Unconjugated

**Modification:** Unmodified

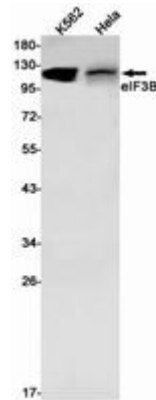
**Constituents:** PBS (without Mg<sup>2+</sup> and Ca<sup>2+</sup>), pH 7.3 containing 50% glycerol, 0.5% BSA and 0.02% sodium azide

**Research Areas:** Epigenetics and Nuclear Signaling

**Storage & Shipping:** Store at -20°C. Avoid repeated freezing and thawing



Immunohistochemistry analysis of paraffin-embedded Human breast cancer using eIF3B antibody. High-pressure and temperature Sodium Citrate pH 6.0 was used for antigen retrieval.



Western blot analysis of eIF3B in K562, HeLa lysates using eIF3B antibody.