

EIF2A RABBIT MAB

Cat.#: N262164

Product Name: Anti-eIF2A Rabbit Monoclonal Antibody

Synonyms: CDA02; EIF-2A; MST089; MSTP004; MSTP089

UNIPROT ID: Q9BY44

Background: Functions in the early steps of protein synthesis of a small number of specific mRNAs. Acts by directing the binding of methionyl-tRNAⁱ to 40S ribosomal subunits. In contrast to the eIF-2 complex, it binds methionyl-tRNAⁱ to 40 S subunits in a codon-dependent manner, whereas the eIF-2 complex binds methionyl-tRNAⁱ to 40 S subunits in a GTP-dependent manner.

Immunogen: A synthetic peptide of human eIF2A

Applications: WB, ICC/IF

Recommended Dilutions: WB: 1/500-1/1000 IF: 1/50-1/200

Host Species: Rabbit

Clonality: Rabbit Monoclonal

Clone ID: R08-8E2

MW: Calculated MW: 65 kDa; Observed MW: 65 kDa

Isotype: IgG

Purification: Affinity Purified

Species Reactivity: Human, Mouse, Rat

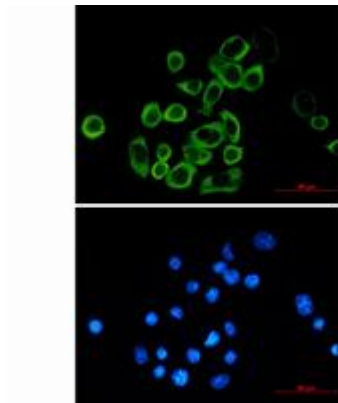
Conjugation: Unconjugated

Modification: Unmodified

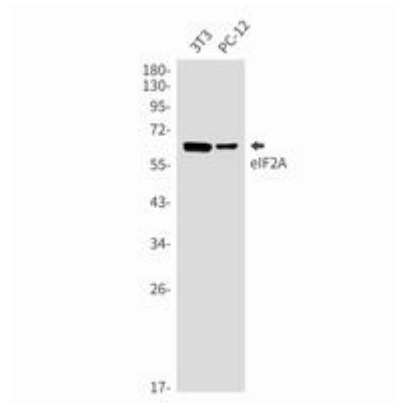
Constituents: PBS (without Mg²⁺ and Ca²⁺), pH 7.3 containing 50% glycerol, 0.5% BSA and 0.02% sodium azide

Research Areas: Epigenetics and Nuclear Signaling

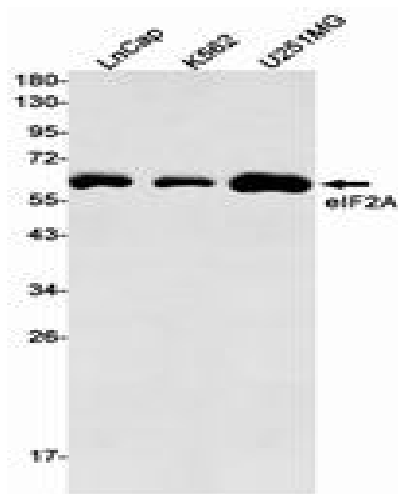
Storage & Shipping: Store at -20°C. Avoid repeated freezing and thawing



Immunocytochemistry analysis of eIF2A (green) in MCF-7 using eIF2A antibody, and DAPI (blue)



Western blot analysis of eIF2A in 3T3, PC-12 lysates using eIF2A antibody.



Western blot analysis of eIF2A in LnCap, K562, U251MG lysates using eIF2A antibody.