

EIF2A (2E4F5) MOUSE MAB

Cat.#: N261144

Product Name: Anti-eIF2A (2E4F5) Mouse Monoclonal Antibody

Synonyms: EIF2S1; EIF2A; Eukaryotic translation initiation factor 2 subunit 1; Eukaryotic translation initiation factor 2 subunit alpha; eIF-2-alpha; eIF-2A; eIF-2alpha

UNIPROT ID: P05198

Background: eIF2A a translation initiation factor that functions in the early steps of protein synthesis by forming a ternary complex with GTP and initiator tRNA. This complex binds to a 40s ribosomal subunit, followed by mRNA binding to form a 43S preinitiation complex.

Immunogen: Purified recombinant human eIF2 α protein fragments expressed in E.coli.

Applications: WB,ICC/IF,IP

Recommended Dilutions: WB: 1/500-1/1000 IF: 1/50-1/200 IP: 1/20

Host Species: Mouse

Clonality: Mouse Monoclonal

Clone ID: 2E4-F5-E7

MW: Calculated MW: 36 kDa; Observed MW: 36 kDa

Isotype: IgG2b

Purification: Affinity Purified

Species Reactivity: Human,Mouse,Rat

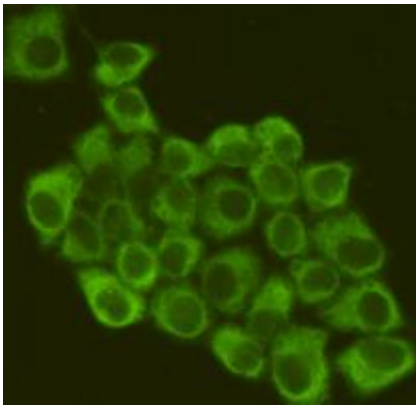
Conjugation: Unconjugated

Modification: Unmodified

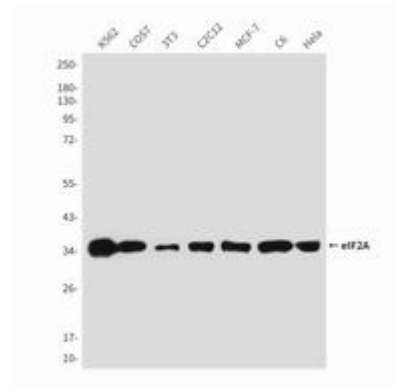
Constituents: PBS (without Mg²⁺ and Ca²⁺), pH 7.3 containing 50% glycerol, 0.5% BSA and 0.02% sodium azide

Research Areas: Epigenetics and Nuclear Signaling

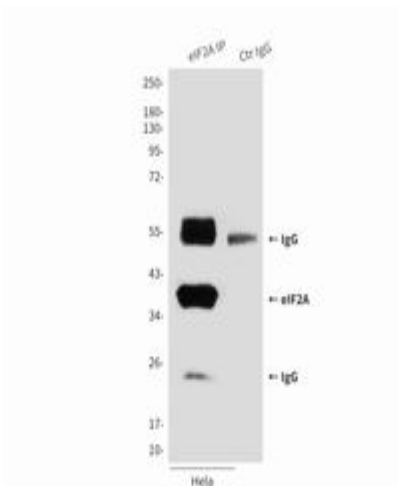
Storage & Shipping: Store at -20°C. Avoid repeated freezing and thawing



Immunofluorescence analysis of eIF2A (2E4F5) in HeLa using eIF2A antibody.



Western blot analysis of eIF2A in K562, COS7, 3T3, C2C12, MCF-7, C6 and HeLa lysates using eIF2A antibody.



Immunoprecipitation analysis of eIF2A (2E4F5) in HeLa lysates using eIF2A antibody.