

## EIF1AX RABBIT PAB

**Cat.#:** S219208

**Product Name:** Anti-EIF1AX Rabbit Polyclonal Antibody

**Synonyms:** EIF1A; EIF4C; eIF-1A; eIF-4C; EIF1AP1

**UNIPROT ID:** P47813 (Gene Accession - BC000793 )

**Background:** This gene encodes an essential eukaryotic translation initiation factor. The protein is required for the binding of the 43S complex (a 40S subunit, eIF2/GTP/Met-tRNA<sub>i</sub> and eIF3) to the 5' end of capped RNA.

**Immunogen:** Fusion protein of human EIF1AX

**Applications:** ELISA, IHC

**Recommended Dilutions:** IHC: 50-200; ELISA: 5000-10000

**Host Species:** Rabbit

**Clonality:** Rabbit Polyclonal

**Isotype:** Immunogen-specific rabbit IgG

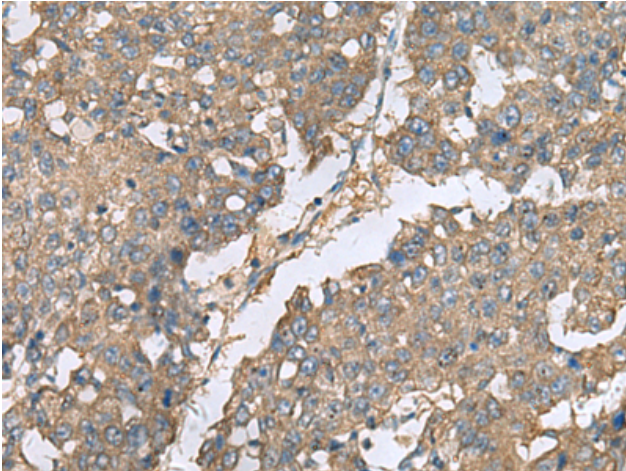
**Purification:** Antigen affinity purification

**Species Reactivity:** Human, Mouse

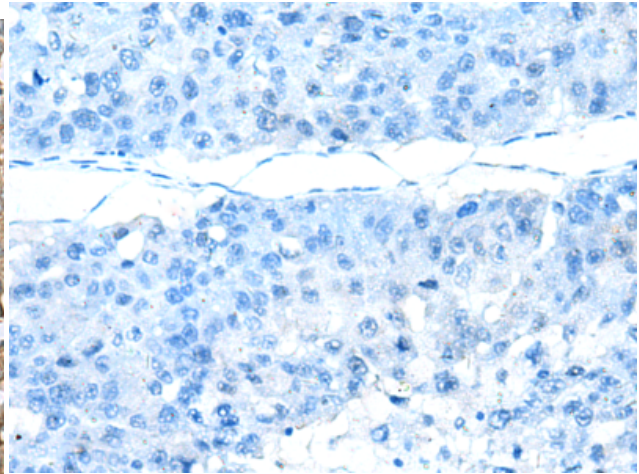
**Constituents:** PBS (without Mg<sup>2+</sup> and Ca<sup>2+</sup>), pH 7.4, 150 mM NaCl, 0.05% Sodium Azide and 40% glycerol

**Research Areas:** Epigenetics and Nuclear Signaling

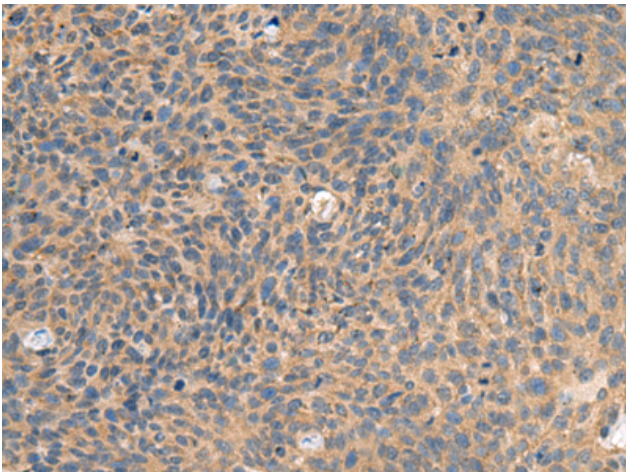
**Storage & Shipping:** Store at -20°C. Avoid repeated freezing and thawing



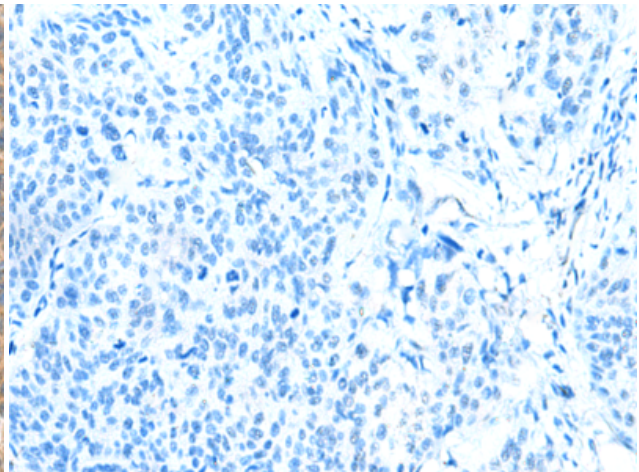
Immunohistochemistry analysis of paraffin embedded Human liver cancer tissue using 219208(EIF1AX Antibody) at a dilution of 1/65(Cytoplasm).



In comparison with the IHC on the left, the same paraffin-embedded Human liver cancer tissue is first treated with the fusion protein and then with 219208(Anti-EIF1AX Antibody) at dilution 1/65.



The image on the left is immunohistochemistry of paraffin-embedded Human cervical cancer tissue using 219208(Anti-EIF1AX Antibody) at a dilution of 1/65.



In comparison with the IHC on the left, the same paraffin-embedded Human cervical cancer tissue is first treated with fusion protein and then with D226054(Anti-EIF1AX Antibody) at dilution 1/65.