

EIF1A RABBIT MAB

Cat.#: N262162

Product Name: Anti-eIF1A Rabbit Monoclonal Antibody

Synonyms: EIF1A; EIF4C; eIF-1A; eIF-4C; EIF1AP1

UNIPROT ID: P47813

Background: Seems to be required for maximal rate of protein biosynthesis. Enhances ribosome dissociation into subunits and stabilizes the binding of the initiator Met-tRNA(I) to 40 S ribosomal subunits.

Immunogen: A synthetic peptide of human eIF1A

Applications: WB,ICC/IF,IP

Recommended Dilutions: WB: 1/500-1/1000 IF: 1/50-1/200 IP: 1/20

Host Species: Rabbit

Clonality: Rabbit Monoclonal

Clone ID: R03-7A9

MW: Calculated MW: 16 kDa; Observed MW: 16 kDa

Isotype: IgG

Purification: Affinity Purified

Species Reactivity: Human,Mouse,Rat

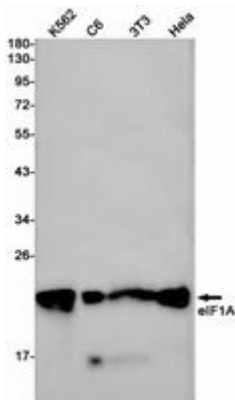
Conjugation: Unconjugated

Modification: Unmodified

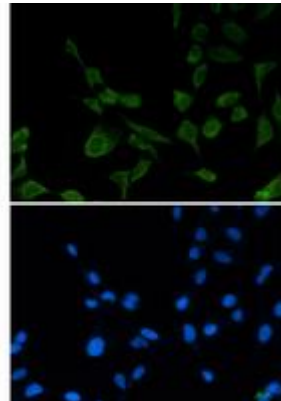
Constituents: PBS (without Mg²⁺ and Ca²⁺), pH 7.3 containing 50% glycerol, 0.5% BSA and 0.02% sodium azide

Research Areas: Epigenetics and Nuclear Signaling

Storage & Shipping: Store at -20°C. Avoid repeated freezing and thawing



Western blot analysis of eIF1A in K562, C6, 3T3, HeLa lysates using eIF1A antibody.



Immunocytochemistry analysis of eIF1A (green) in 293T using eIF1A antibody, and DAPI (blue).