

EIF1A RABBIT MAB

Cat.#: N262163

Product Name: Anti-eIF1A Rabbit Monoclonal Antibody

Synonyms: EIF1A; EIF4C; eIF-1A; eIF-4C; EIF1A1

UNIPROT ID: P47813

Background: Seems to be required for maximal rate of protein biosynthesis. Enhances ribosome dissociation into subunits and stabilizes the binding of the initiator Met-tRNA(I) to 40 S ribosomal subunits.

Immunogen: A synthetic peptide of human eIF1A

Applications: WB,IHC-F,IHC-P,ICC/IF,IP

Recommended Dilutions: WB: 1/500-1/1000 IHC: 1/50-1/100 IF: 1/50-1/200 IP: 1/20

Host Species: Rabbit

Clonality: Rabbit Monoclonal

Clone ID: R04-8B7

MW: Calculated MW: 16 kDa; Observed MW: 16 kDa

Isotype: IgG

Purification: Affinity Purified

Species Reactivity: Human,Mouse,Rat

Conjugation: Unconjugated

Modification: Unmodified

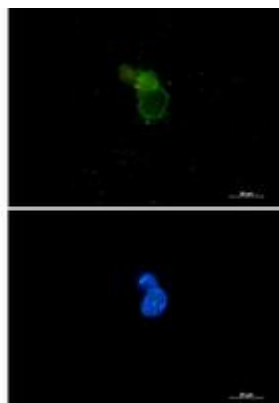
Constituents: PBS (without Mg²⁺ and Ca²⁺), pH 7.3 containing 50% glycerol, 0.5% BSA and 0.02% sodium azide

Research Areas: Epigenetics and Nuclear Signaling

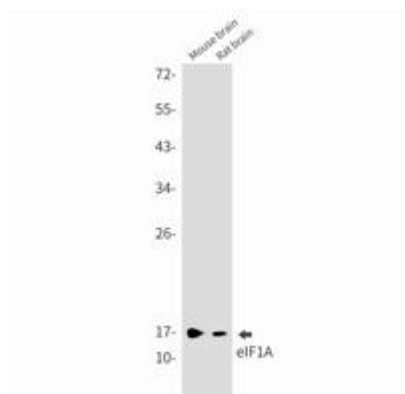
Storage & Shipping: Store at -20°C. Avoid repeated freezing and thawing



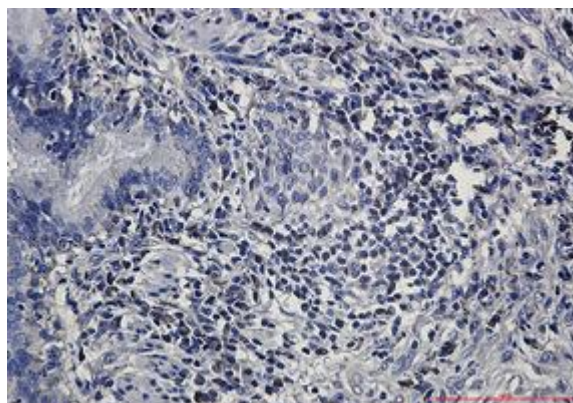
Western blot analysis of eIF1A in LnCap, K562, U251MG, HepG2, MCF-7, HeLa lysates using eIF1A antibody



Immunocytochemistry analysis of eIF1A (green) in 293 using eIF1A antibody, and DAPI (blue).



Western blot analysis of eIF1A in mouse brain, rat brain lysates using eIF1A antibody.



Immunohistochemistry analysis of paraffin-embedded Human lung cancer using eIF1A antibody. High-pressure and temperature Sodium Citrate pH 6.0 was used for antigen retrieval.