

EID1 RABBIT PAB

Cat.#: S217389

Product Name: Anti-EID1 Rabbit Polyclonal Antibody

Synonyms: CR11; EID-1; RBP21; PTD014; C15orf3; PNAS-22; IRO45620

UNIPROT ID: Q9Y6B2 (Gene Accession - NP_055150)

Background: EIA-like inhibitor of differentiation-1 (EID-1), an acetyltransferase enzyme, binds both the retinoblastoma protein (Rb), a regulator of cell cycle and tissue specific transcription, and the adenovirus EIA-associated cellular p300 transcriptional co-activator protein. EID-1 inhibits cellular differentiation by blocking the histone acetyltransferase activity of p300. EID-1 also acetylates both histones and non-histone proteins such as NCOA3 co-activator. By acetylating histones, EID-1 gives a specific tag for transcriptional activation. In addition to binding Rb and p300, EID-1 also binds to phosphorylated CREB protein, mediating cAMP gene regulation. EID-1 augments the activity of phosphorylated CREB and activates transcription of cAMP responsive genes as a co-activator.

Immunogen: Fusion protein of human EID1

Applications: ELISA, IHC

Recommended Dilutions: IHC: 50-200; ELISA: 2000-5000

Host Species: Rabbit

Clonality: Rabbit Polyclonal

Isotype: Immunogen-specific rabbit IgG

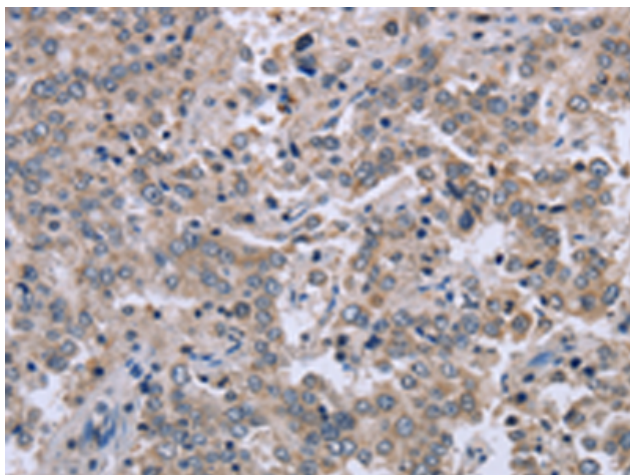
Purification: Antigen affinity purification

Species Reactivity: Human

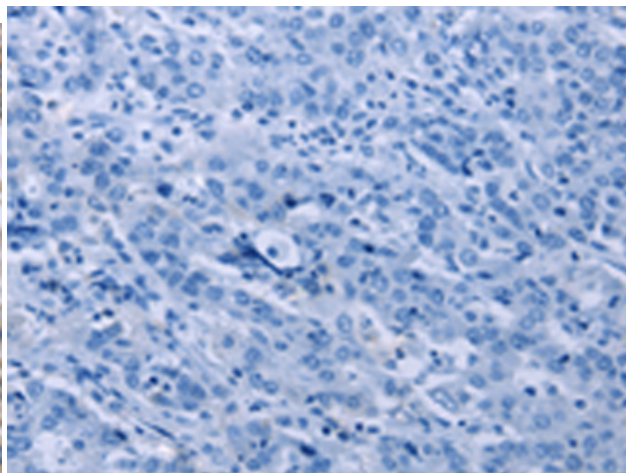
Constituents: PBS (without Mg²⁺ and Ca²⁺), pH 7.4, 150 mM NaCl, 0.05% Sodium Azide and 40% glycerol

Research Areas: Signal Transduction, Epigenetics and Nuclear Signaling, Cancer

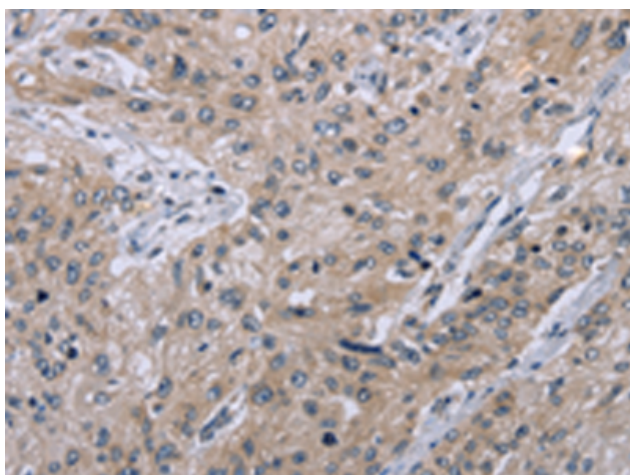
Storage & Shipping: Store at -20°C. Avoid repeated freezing and thawing



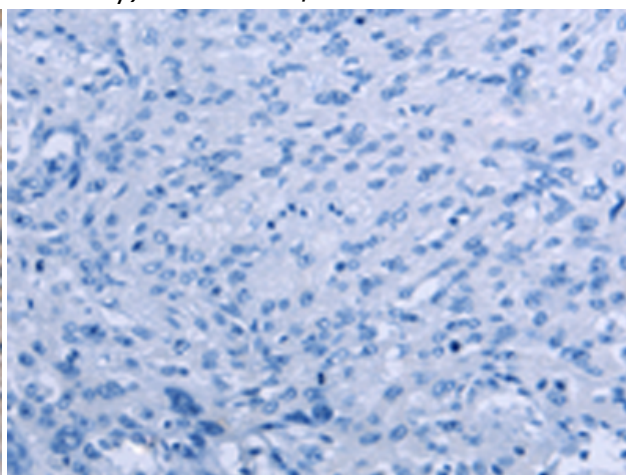
Immunohistochemistry analysis of paraffin embedded Human liver cancer tissue using 217389(EID1 Antibody) at a dilution of 1/40(Nucleus or Cytoplasm).



In comparison with the IHC on the left, the same paraffin-embedded Human liver cancer tissue is first treated with the fusion protein and then with 217389(Anti-EID1 Antibody) at dilution 1/40.



The image on the left is immunohistochemistry of paraffin-embedded Human esophagus cancer tissue using 217389(Anti-EID1 Antibody) at a dilution of 1/40.



In comparison with the IHC on the left, the same paraffin-embedded Human esophagus cancer tissue is first treated with fusion protein and then with D222277(Anti-EID1 Antibody) at dilution 1/40.