

EHD1 RABBIT MAB

Cat.#: N262160

Product Name: Anti-EHD1 Rabbit Monoclonal Antibody

Synonyms: EHD1; H PAST; hPAST1; PAST; PAST homolog 1; PAST1; Tilin

UNIPROT ID: Q9H4M9

Background: Acts in early endocytic membrane fusion and membrane trafficking of recycling endosomes.

Immunogen: A synthetic peptide of human EHD1

Applications: WB, ICC/IF, IP

Recommended Dilutions: WB: 1/500-1/1000 IF: 1/50-1/200 IP: 1/20

Host Species: Rabbit

Clonality: Rabbit Monoclonal

Clone ID: R04-8B5

MW: Calculated MW: 61 kDa; Observed MW: 61 kDa

Isotype: IgG

Purification: Affinity Purified

Species Reactivity: Human, Mouse, Rat

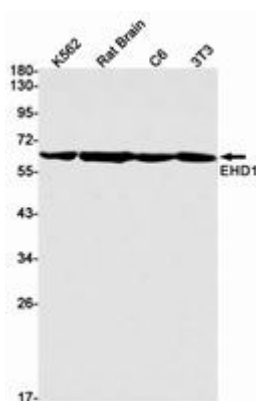
Conjugation: Unconjugated

Modification: Unmodified

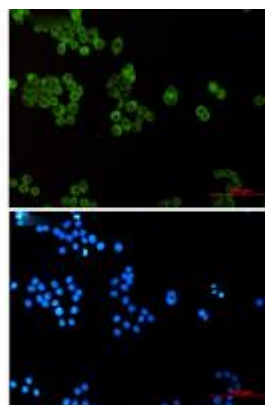
Constituents: PBS (without Mg²⁺ and Ca²⁺), pH 7.3 containing 50% glycerol, 0.5% BSA and 0.02% sodium azide

Research Areas: Cardiovascular

Storage & Shipping: Store at -20°C. Avoid repeated freezing and thawing



Western blot analysis of EHD1 in K562, rat Brain, C6, 3T3 lysates using EHD1 antibody.



Immunocytochemistry analysis of EHD1 (green) in HeLa using EHD1 antibody, and DAPI (blue).



Product Description

Pioneering GTPase and Oncogene Product Development since 2010
