

## EHD1 RABBIT MAB

**Cat.#:** N262161

**Product Name:** Anti-EHD1 Rabbit Monoclonal Antibody

**Synonyms:** EHD1; H PAST; hPAST1; PAST; PAST homolog 1; PAST1; Tilin

**UNIPROT ID:** Q9H4M9

**Background:** Acts in early endocytic membrane fusion and membrane trafficking of recycling endosomes.

**Immunogen:** A synthetic peptide of human EHD1

**Applications:** WB,IHC-F,IHC-P,ICC/IF,IP

**Recommended Dilutions:** WB: 1/500-1/1000 IHC: 1/50-1/100 IF: 1/50-1/200 IP: 1/20

**Host Species:** Rabbit

**Clonality:** Rabbit Monoclonal

**Clone ID:** R01-4E6

**MW:** Calculated MW: 61 kDa; Observed MW: 61 kDa

**Isotype:** IgG

**Purification:** Affinity Purified

**Species Reactivity:** Human,Mouse,Rat

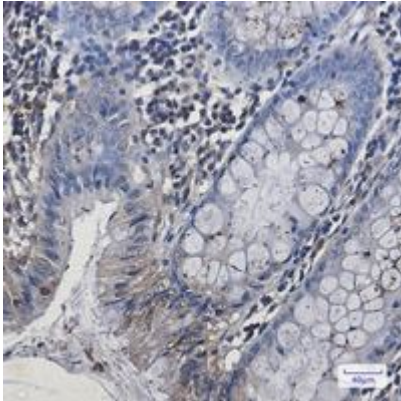
**Conjugation:** Unconjugated

**Modification:** Unmodified

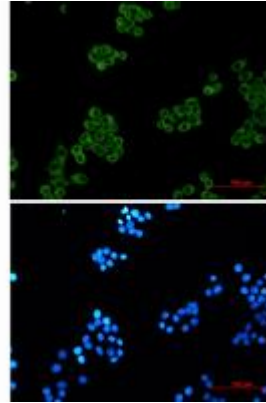
**Constituents:** PBS (without Mg<sup>2+</sup> and Ca<sup>2+</sup>), pH 7.3 containing 50% glycerol, 0.5% BSA and 0.02% sodium azide

**Research Areas:** Cardiovascular

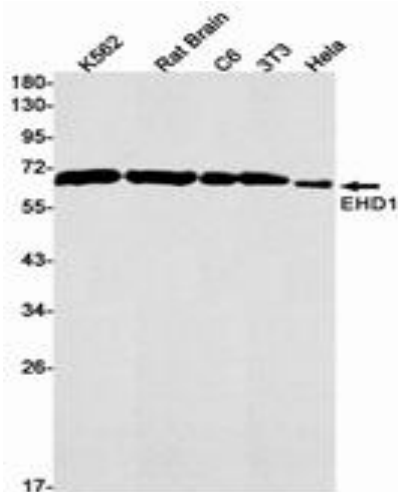
**Storage & Shipping:** Store at -20°C. Avoid repeated freezing and thawing



Immunohistochemistry analysis of paraffin-embedded Human colon cancer tissue using EHD1 antibody. High-pressure and temperature Sodium Citrate pH 6.0 was used for antigen retrieval.



Immunocytochemistry analysis of EHD1 (green) in Hela using EHD1 antibody, and DAPI (blue).



Western blot analysis of EHD1 in K562, rat Brain, C6, 3T3, Hela lysates using EHD1 antibody.