

EG5 RABBIT MAB

Cat.#: N263312

Product Name: Anti-Eg5 Rabbit Monoclonal Antibody

Synonyms: KIF11; EG5; KNSL1; TRIP5; Kinesin-like protein KIF11; Kinesin-like protein 1; Kinesin-like spindle protein HKSP; Kinesin-related motor protein Eg5; Thyroid receptor-interacting protein 5; TR-interacting protein 5; TRIP-5

UNIPROT ID: P52732

Background: Motor protein required for establishing a bipolar spindle. Blocking of KIF11 prevents centrosome migration and arrest cells in mitosis with monoastral microtubule arrays.

Immunogen: Recombinant protein of human Eg5

Applications: WB, ICC/IF

Recommended Dilutions: WB: 1/500-1/1000 IF: 1/50-1/200

Host Species: Rabbit

Clonality: Rabbit Monoclonal

Clone ID: R02-3H5

MW: Calculated MW: 119 kDa; Observed MW: 119 kDa

Isotype: IgG

Purification: Affinity Purified

Species Reactivity: Human, Mouse, Rat

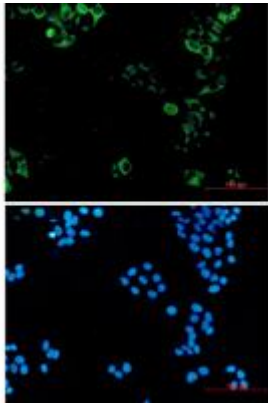
Conjugation: Unconjugated

Modification: Unmodified

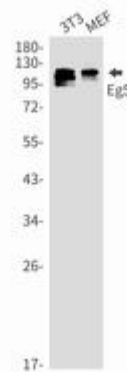
Constituents: PBS (without Mg²⁺ and Ca²⁺), pH 7.3 containing 50% glycerol, 0.5% BSA and 0.02% sodium azide

Research Areas: Signal Transduction

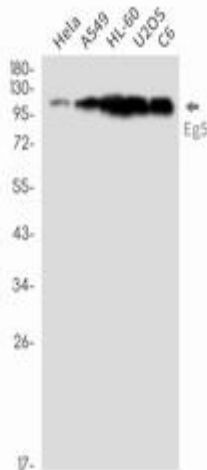
Storage & Shipping: Store at -20°C. Avoid repeated freezing and thawing



Immunocytochemistry analysis of Eg5 (green) in HeLa using Eg5 antibody, and DAPI (blue)



Western blot analysis of Eg5 in 3T3, MEF lysates using Eg5 antibody.



Western blot analysis of Eg5 in HeLa, A549, HL-60, U2OS, C6 lysates using Eg5 antibody.