

EG5 (4H3) MOUSE MAB

Cat.#: N261006

Product Name: Anti-Eg5 (4H3) Mouse Monoclonal Antibody

Synonyms: KIF11; EG5; KNSL1; TRIP5; Kinesin-like protein KIF11; Kinesin-like protein 1; Kinesin-like spindle protein HKSP; Kinesin-related motor protein Eg5; Thyroid receptor-interacting protein 5; TR-interacting protein 5; TRIP-5

UNIPROT ID: P52732

Background: Motor protein required for establishing a bipolar spindle. Blocking of KIF11 prevents centrosome migration and arrest cells in mitosis with monoastrial microtubule arrays.

Immunogen: Purified recombinant human Eg5 protein fragments expressed in E.coli.

Applications: WB, ICC/IF, IP

Recommended Dilutions: WB: 1/500-1/1000 IF: 1/50-1/200 IP: 1/20

Host Species: Mouse

Clonality: Mouse Monoclonal

Clone ID: 4H3-1F12

MW: Calculated MW: 119 kDa; Observed MW: 130 kDa

Isotype: IgG1

Purification: Affinity Purified

Species Reactivity: Human

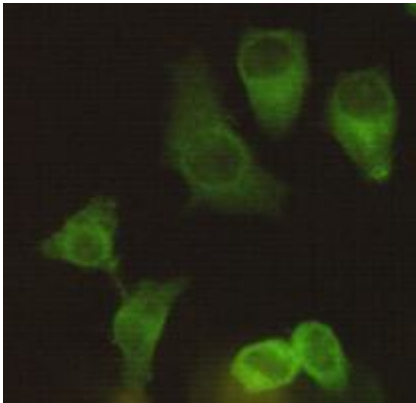
Conjugation: Unconjugated

Modification: Unmodified

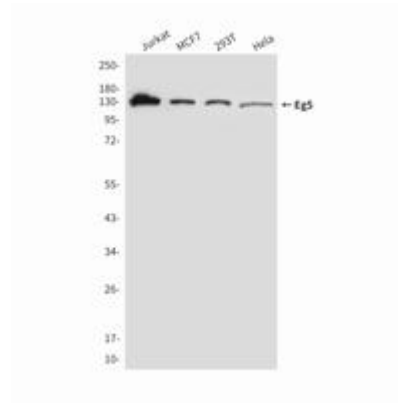
Constituents: PBS (without Mg²⁺ and Ca²⁺), pH 7.3 containing 50% glycerol, 0.5% BSA and 0.02% sodium azide

Research Areas: Signal Transduction

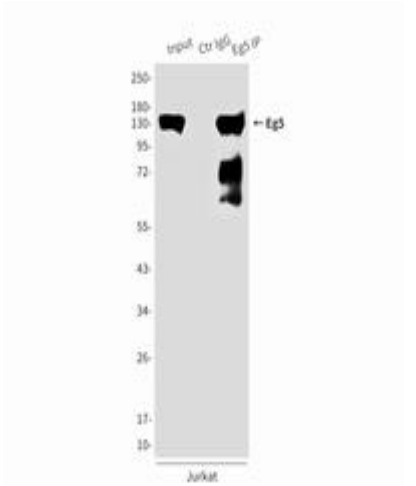
Storage & Shipping: Store at -20°C. Avoid repeated freezing and thawing



Immunocytochemistry analysis of Eg5 (4H3) in Hela using Eg5 antibody.



Western blot analysis of Eg5 in MCF-7, 293T, Jurkat and Hela lysates using Eg5 antibody.



Immunoprecipitation analysis of Eg5 (4H3) in Jurkat lysates using Eg5 antibody.