

## EFHC2 RABBIT PAB

**Cat.#:** S219408

**Product Name:** Anti-EFHC2 Rabbit Polyclonal Antibody

**Synonyms:** MRX74; dJ1158H2.1

**UNIPROT ID:** Q5JST6 (Gene Accession - BC031039 )

**Background:** This gene encodes a protein which contains three DM10 domains and three calcium-binding EF-hand motifs. A related protein is encoded by a gene on chromosome 6. It has been suggested that both proteins are involved in the development of epilepsy (PMID: 15258581, 16112844) and that this gene may be associated with fear recognition in individuals with Turner syndrome. [provided by RefSeq, Aug 2011]

**Immunogen:** Fusion protein of human EFHC2

**Applications:** ELISA, IHC

**Recommended Dilutions:** IHC: 200-300; ELISA: 5000-10000

**Host Species:** Rabbit

**Clonality:** Rabbit Polyclonal

**Isotype:** Immunogen-specific rabbit IgG

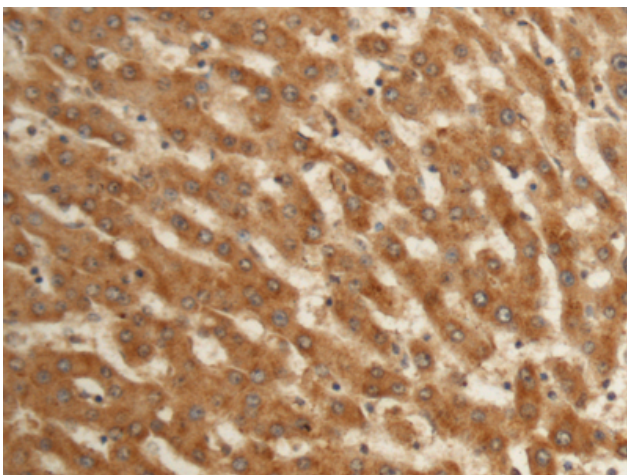
**Purification:** Antigen affinity purification

**Species Reactivity:** Human

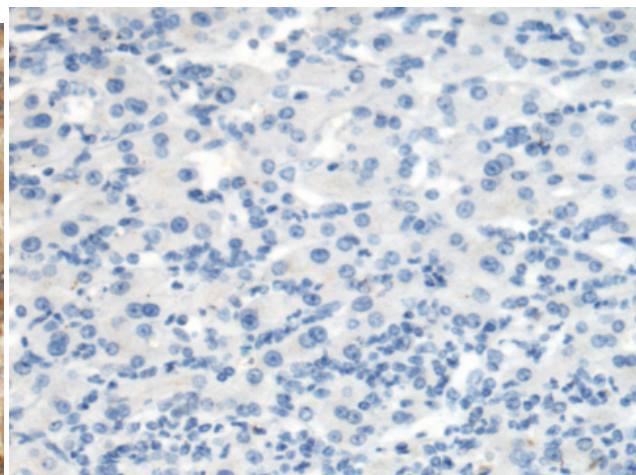
**Constituents:** PBS (without Mg<sup>2+</sup> and Ca<sup>2+</sup>), pH 7.4, 150 mM NaCl, 0.05% Sodium Azide and 40% glycerol

**Research Areas:** Cell Biology

**Storage & Shipping:** Store at -20°C. Avoid repeated freezing and thawing



Immunohistochemistry analysis of paraffin embedded Human liver cancer tissue using 219408(EFHC2 Antibody) at a dilution of 1/150(Cytoplasm).



In comparison with the IHC on the left, the same paraffin-embedded Human liver cancer tissue is first treated with the fusion protein and then with 219408(Anti-EFHC2 Antibody) at dilution 1/150.