

EFEMP1 RABBIT MAB

Cat.#: N263311

Product Name: Anti-EFEMP1 Rabbit Monoclonal Antibody

Synonyms: DHRD; DRAD; FBNL; MLVT; MTLV; S1-5; FBLN3; FIBL-3; Fibulin-3

UNIPROT ID: Q12805

Background: Binds EGFR, the EGF receptor, inducing EGFR autophosphorylation and the activation of downstream signaling pathways.

Immunogen: Recombinant protein of human EFEMP1/Fibulin-3

Applications: WB,IHC-P,IP

Recommended Dilutions: WB: 1/500-1/1000 IHC: 1/50-1/100 IP: 1/20

Host Species: Rabbit

Clonality: Rabbit Monoclonal

Clone ID: R01-7C7

MW: Calculated MW: 55 kDa; Observed MW: 55 kDa

Isotype: IgG

Purification: Affinity Purified

Species Reactivity: Human

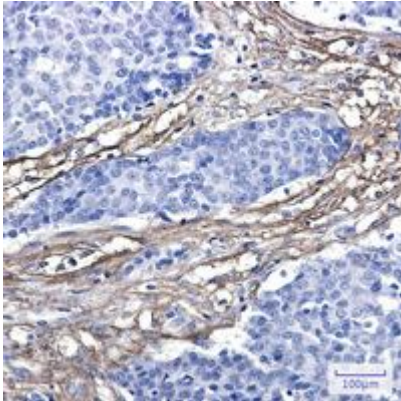
Conjugation: Unconjugated

Modification: Unmodified

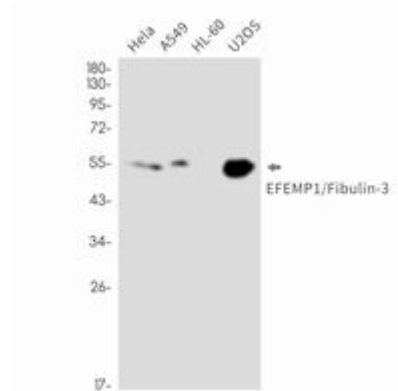
Constituents: PBS (without Mg²⁺ and Ca²⁺), pH 7.3 containing 50% glycerol, 0.5% BSA and 0.02% sodium azide

Research Areas: -

Storage & Shipping: Store at -20°C. Avoid repeated freezing and thawing



Immunohistochemistry analysis of paraffin-embedded Human breast cancer using EFEMP1/Fibulin3 antibody. High-pressure and temperature Sodium Citrate pH 6.0 was used for antigen retrieval.



Western blot analysis of EFEMP1/Fibulin3 in Hela, A549, HL-60, U2OS lysates using EFEMP1 antibody.