

EEPD1 RABBIT PAB

Cat.#: S215699

Product Name: Anti-EEPD1 Rabbit Polyclonal Antibody

Synonyms: HSPC107

UNIPROT ID: Q7L9B9 (Gene Accession - NP_085139)

Background: EEPD1(endonuclease/exonuclease/phosphatase family domain containing 1), also known as HSPC107, is a 569 amino acid protein that contains one HhH domain. A significant decrease in the relative transcriptional level of EEPD1 is induced by long-term heat stress exposure. Conversely, EEPD1 is up-regulated in bovine adipogenic processes related to intramuscular pre-adipocyte differentiation. Encoded by a gene that maps to human chromosome 7p14.2, EEPD1 plays a role in DNA binding and repair. Chromosome 7 makes up about 5% of the human genome and contains 158 million bases encoding more than 1,000 genes. Osteogenesis imperfecta, Pendred syndrome, Lissencephaly, Citrullinemia and Shwachman-Diamond syndrome are associated with Chromosome 7.

Immunogen: Synthetic peptide of human EEPD1

Applications: ELISA, WB, IHC

Recommended Dilutions: IHC: 20-100;WB: 200-1000;ELISA: 5000-10000

Host Species: Rabbit

Clonality: Rabbit Polyclonal

Isotype: Immunogen-specific rabbit IgG

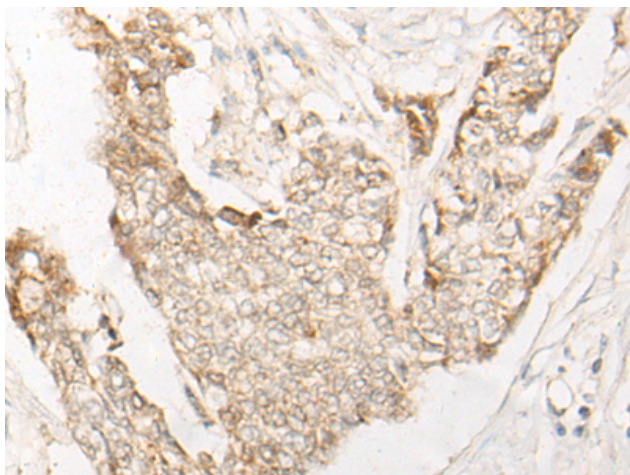
Purification: Antigen affinity purification

Species Reactivity: Human, Mouse

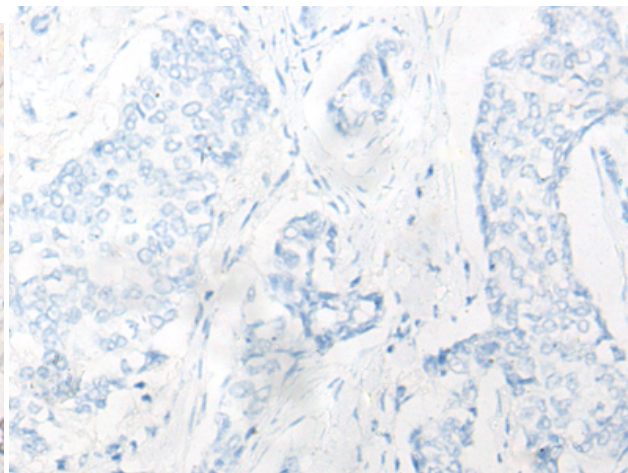
Constituents: PBS (without Mg²⁺ and Ca²⁺), pH 7.4, 150 mM NaCl, 0.05% Sodium Azide and 40% glycerol

Research Areas: Epigenetics and Nuclear Signaling

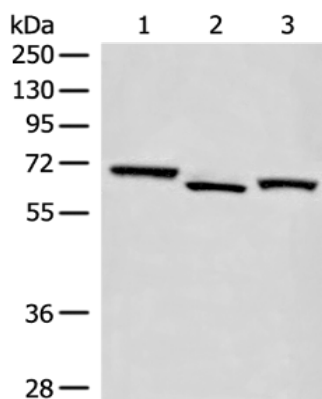
Storage & Shipping: Store at -20°C. Avoid repeated freezing and thawing



Immunohistochemistry analysis of paraffin embedded Human breast cancer tissue using 215699(EEPD1 Antibody) at a dilution of 1/20(Nucleus).



In comparison with the IHC on the left, the same paraffin-embedded Human breast cancer tissue is first treated with the synthetic peptide and then with 215699(Anti-EEPD1 Antibody) at dilution 1/20.



Gel: 8%SDS-PAGE, Lysate: 40 μ g;
 Lane 1-3: PC-3 cell, Human cerebrum tissue,
 231 cell lysates;
 Primary antibody: 215699(EEPD1 Antibody) at
 dilution 1/300;
 Secondary antibody: Goat anti rabbit IgG at
 1/8000 dilution;
 Exposure time: 30 seconds