

EDIL3 RABBIT PAB

Cat.#: S217385

Product Name: Anti-EDIL3 Rabbit Polyclonal Antibody

Synonyms: DEL1

UNIPROT ID: O43854 (Gene Accession - BC030828)

Background: The protein encoded by this gene is an integrin ligand. It plays an important role in mediating angiogenesis and may be important in vessel wall remodeling and development. It also influences endothelial cell behavior.

Immunogen: Fusion protein of human EDIL3

Applications: ELISA, WB, IHC

Recommended Dilutions: IHC: 100-300;WB: 500-2000;ELISA: 5000-10000

Host Species: Rabbit

Clonality: Rabbit Polyclonal

Isotype: Immunogen-specific rabbit IgG

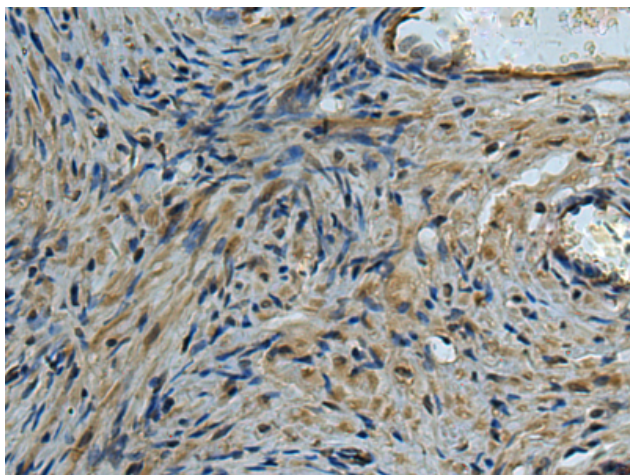
Purification: Antigen affinity purification

Species Reactivity: Human, Mouse

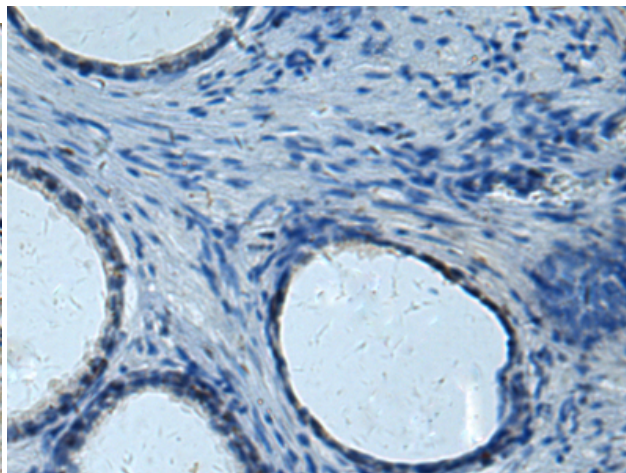
Constituents: PBS (without Mg²⁺ and Ca²⁺), pH 7.4, 150 mM NaCl, 0.05% Sodium Azide and 40% glycerol

Research Areas: Signal Transduction, Cardiovascular

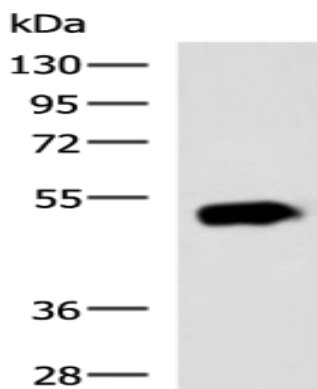
Storage & Shipping: Store at -20°C. Avoid repeated freezing and thawing



Immunohistochemistry analysis of paraffin embedded Human prostate cancer tissue using 217385(EDIL3 Antibody) at a dilution of 1/85(Secreted).



In comparison with the IHC on the left, the same paraffin-embedded Human prostate cancer tissue is first treated with the fusion protein and then with 217385(Anti-EDIL3 Antibody) at dilution 1/85.



Gel: 8%SDS-PAGE, Lysate: 40 µg;
Lane: Human pancreas tissue lysate;
Primary antibody: 217385(EDIL3 Antibody) at dilution 1/700;
Secondary antibody: HRP-conjugated Goat anti rabbit IgG at 1/5000 dilution;
Exposure time: 1 minute