

EDEM2 RABBIT PAB

Cat.#: S212144

Product Name: Anti-EDEM2 Rabbit Polyclonal Antibody

Synonyms: C20orf31; C20orf49; bA4204.1

UNIPROT ID: Q9BV94 (Gene Accession - BC001371)

Background: In the endoplasmic reticulum (ER), misfolded proteins are retrotranslocated to the cytosol and degraded by the proteasome in a process known as ER-associated degradation (ERAD). EDEM2 belongs to a family of proteins involved in ERAD of glycoproteins (Mast et al., 2005 [PubMed 15537790]).

Immunogen: Fusion protein of human EDEM2

Applications: ELISA, IHC

Recommended Dilutions: IHC: 25-100; ELISA: 500-1000

Host Species: Rabbit

Clonality: Rabbit Polyclonal

Isotype: Immunogen-specific rabbit IgG

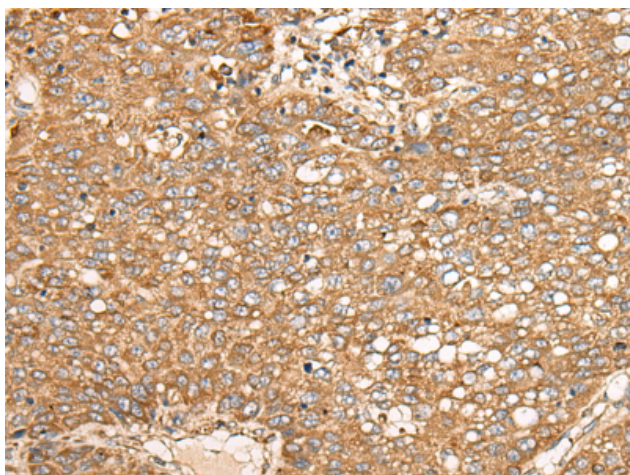
Purification: Antigen affinity purification

Species Reactivity: Human

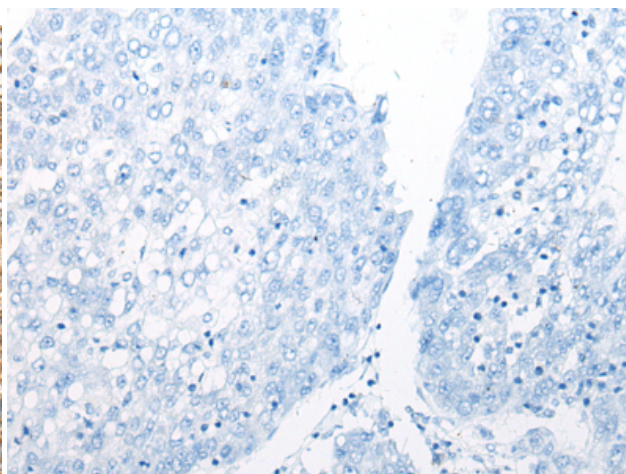
Constituents: PBS (without Mg²⁺ and Ca²⁺), pH 7.4, 150 mM NaCl, 0.05% Sodium Azide and 40% glycerol

Research Areas: Signal Transduction

Storage & Shipping: Store at -20°C. Avoid repeated freezing and thawing



Immunohistochemistry analysis of paraffin embedded Human liver cancer tissue using 212144(EDEM2 Antibody) at a dilution of 1/30(Cytoplasm).



In comparison with the IHC on the left, the same paraffin-embedded Human liver cancer tissue is first treated with the fusion protein and then with 212144(Anti-EDEM2 Antibody) at dilution 1/30.