

ECM1 RABBIT PAB

Cat.#: S221229

Product Name: Anti-ECM1 Rabbit Polyclonal Antibody

Synonyms: URBWD

UNIPROT ID: Q16610 (Gene Accession - NP_073155)

Background: This gene encodes a soluble protein that is involved in endochondral bone formation, angiogenesis, and tumor biology. It also interacts with a variety of extracellular and structural proteins, contributing to the maintenance of skin integrity and homeostasis. Mutations in this gene are associated with lipoid proteinosis disorder (also known as hyalinosis cutis et mucosae or Urbach-Wiethe disease) that is characterized by generalized thickening of skin, mucosae and certain viscera. Alternatively spliced transcript variants encoding distinct isoforms have been described for this gene.

Immunogen: Synthetic peptide of human ECM1

Applications: ELISA, WB, IHC

Recommended Dilutions: IHC: 25-50;WB: 500-2000;ELISA: 5000-10000

Host Species: Rabbit

Clonality: Rabbit Polyclonal

Isotype: Immunogen-specific rabbit IgG

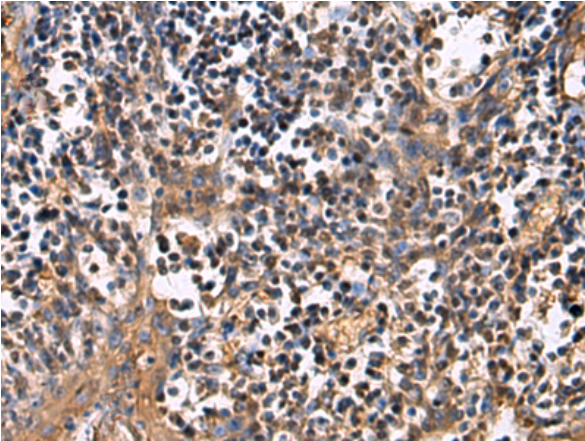
Purification: Antigen affinity purification

Species Reactivity: Human

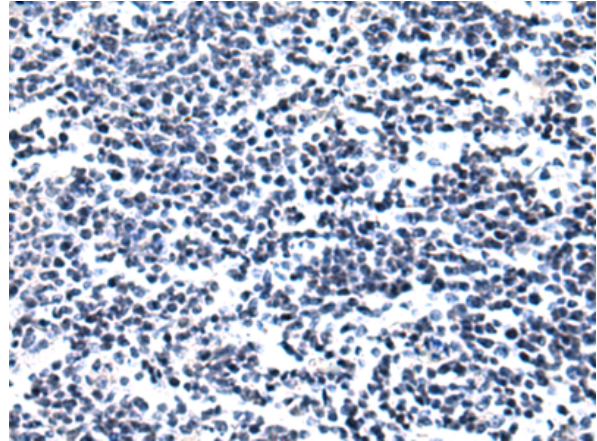
Constituents: PBS (without Mg²⁺ and Ca²⁺), pH 7.4, 150 mM NaCl, 0.05% Sodium Azide and 40% glycerol

Research Areas: Immunology

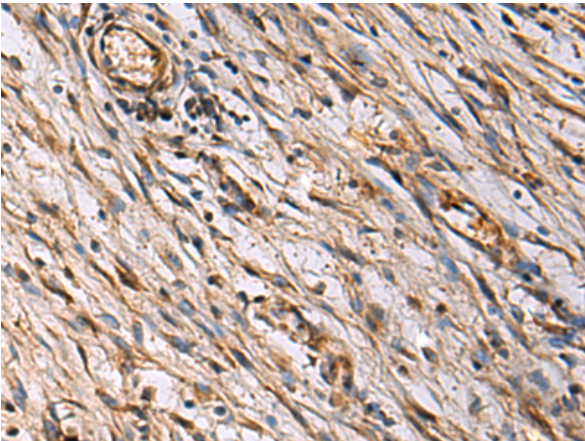
Storage & Shipping: Store at -20°C. Avoid repeated freezing and thawing



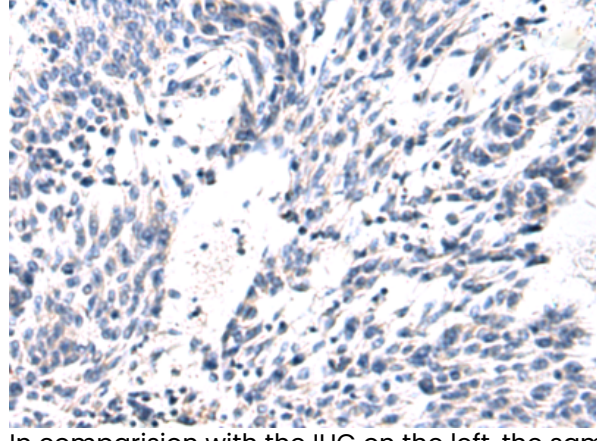
Immunohistochemistry analysis of paraffin embedded Human tonsil tissue using 221229(ECM1 Antibody) at a dilution of 1/25(Cytoplasm).



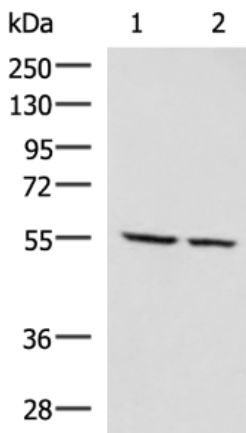
In comparison with the IHC on the left, the same paraffin-embedded Human tonsil tissue is first treated with the synthetic peptide and then with 221229(Anti-ECM1 Antibody) at dilution 1/25.



The image on the left is immunohistochemistry of paraffin-embedded Human colorectal cancer tissue using 221229(Anti-ECM1 Antibody) at a dilution of 1/25.



In comparison with the IHC on the left, the same paraffin-embedded Human colorectal cancer tissue is first treated with synthetic peptide and then with D262737(Anti-ECM1 Antibody) at dilution 1/25.



Gel: 8%SDS-PAGE, Lysate: 40 µg;
Lane 1-2: LOVO and LO2 cell lysates;
Primary antibody: 221229(ECM1 Antibody) at dilution 1/650;
Secondary antibody: HRP-conjugated Goat anti rabbit IgG at 1/5000 dilution;
Exposure time: 1 minute



Product Description

Pioneering GTPase and Oncogene Product Development since 2010
