

EARS2 RABBIT PAB

Cat.#: S222307

Product Name: Anti-EARS2 Rabbit Polyclonal Antibody

Synonyms: MSE1; gluRS; COXPD12

UNIPROT ID: Q5JPH6 (Gene Accession - NP_001077083)

Background: This gene encodes a member of the class I family of aminoacyl-tRNA synthetases. These enzymes play a critical role in protein biosynthesis by charging tRNAs with their cognate amino acids. This protein is encoded by the nuclear genome but is likely to be imported to the mitochondrion where it is thought to catalyze the ligation of glutamate to tRNA molecules. Mutations in this gene have been associated with combined oxidative phosphorylation deficiency 12 (COXPD12). Alternative splicing results in multiple transcript variants.

Immunogen: Synthetic peptide of human EARS2

Applications: ELISA, IHC

Recommended Dilutions: IHC: 25-50; ELISA: 5000-10000

Host Species: Rabbit

Clonality: Rabbit Polyclonal

Isotype: Immunogen-specific rabbit IgG

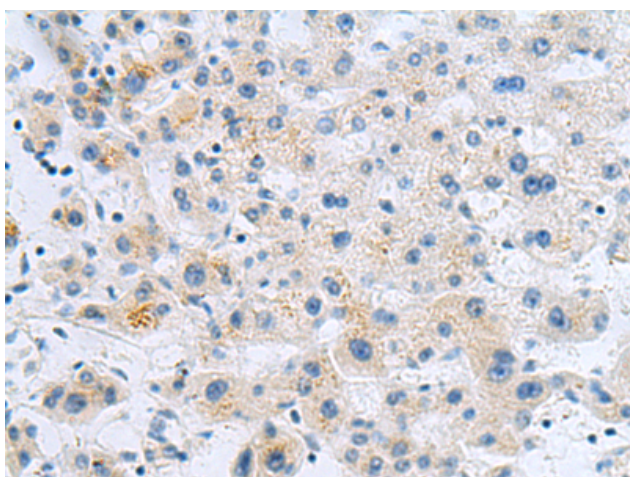
Purification: Antigen affinity purification

Species Reactivity: Human, Mouse

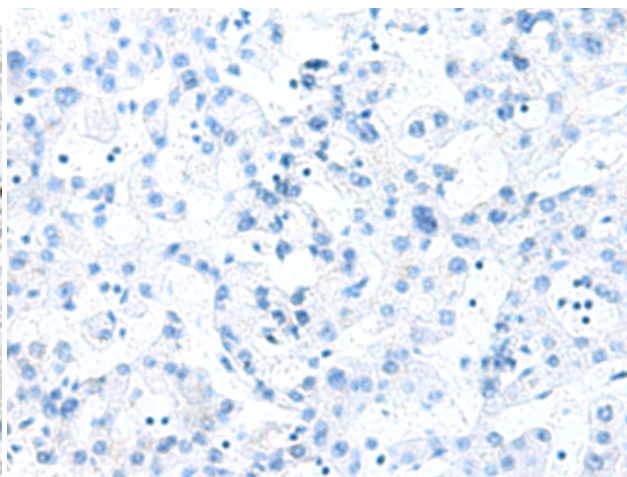
Constituents: PBS (without Mg²⁺ and Ca²⁺), pH 7.4, 150 mM NaCl, 0.05% Sodium Azide and 40% glycerol

Research Areas: Metabolism, Epigenetics and Nuclear Signaling

Storage & Shipping: Store at -20°C. Avoid repeated freezing and thawing



Immunohistochemistry analysis of paraffin embedded Human liver cancer tissue using 222307 (EARS2 Antibody) at a dilution of 1/20 (Cytoplasm).



In comparison with the IHC on the left, the same paraffin-embedded Human liver cancer tissue is first treated with the synthetic peptide and then with 222307 (Anti-EARS2 Antibody) at dilution 1/20.