

E2F7 RABBIT PAB

Cat.#: S213487

Product Name: Anti-E2F7 Rabbit Polyclonal Antibody

Synonyms: no

UNIPROT ID: Q96AV8 (Gene Accession - NP_976328)

Background: Atypical E2F transcription factor that participates to various processes such as angiogenesis, polyploidization of specialized cells and DNA damage response. It plays a key role in polyploidization of cells in placenta and liver by regulating the endocycle, probably by repressing genes promoting cytokinesis and antagonizing action of classical E2F proteins (E2F1, E2F2 and/or E2F3).

Immunogen: Synthetic peptide of human E2F7

Applications: ELISA, IHC

Recommended Dilutions: IHC: 50–200; ELISA: 1000–5000

Host Species: Rabbit

Clonality: Rabbit Polyclonal

Isotype: Immunogen-specific rabbit IgG

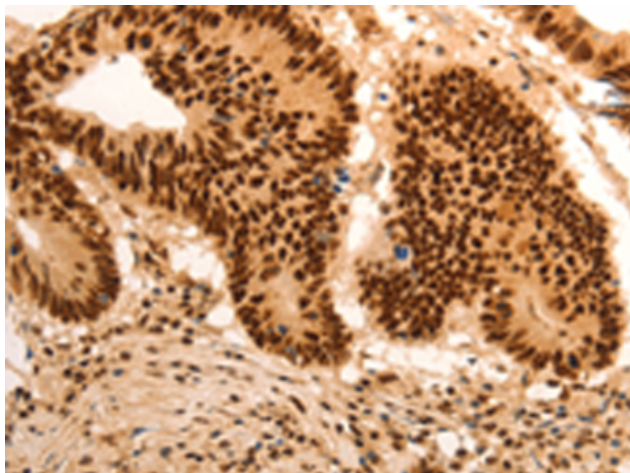
Purification: Antigen affinity purification

Species Reactivity: Human

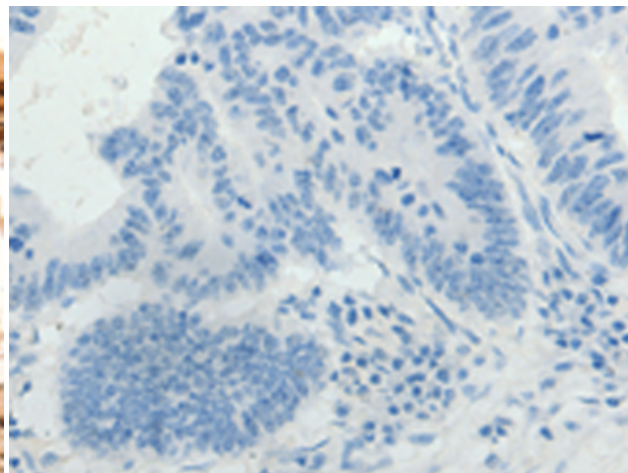
Constituents: PBS (without Mg²⁺ and Ca²⁺), pH 7.4, 150 mM NaCl, 0.05% Sodium Azide and 40% glycerol

Research Areas: Epigenetics and Nuclear Signaling

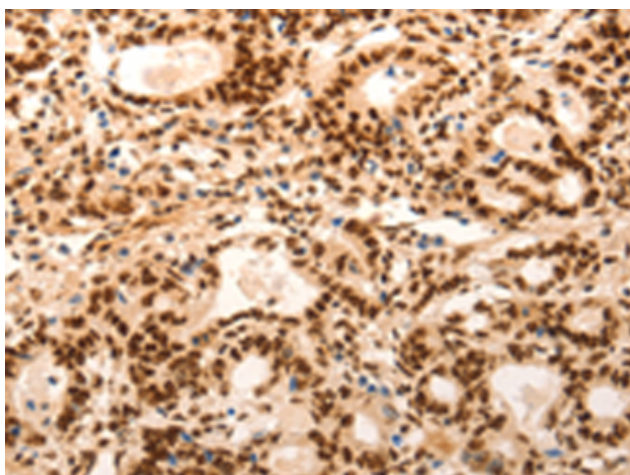
Storage & Shipping: Store at -20°C. Avoid repeated freezing and thawing



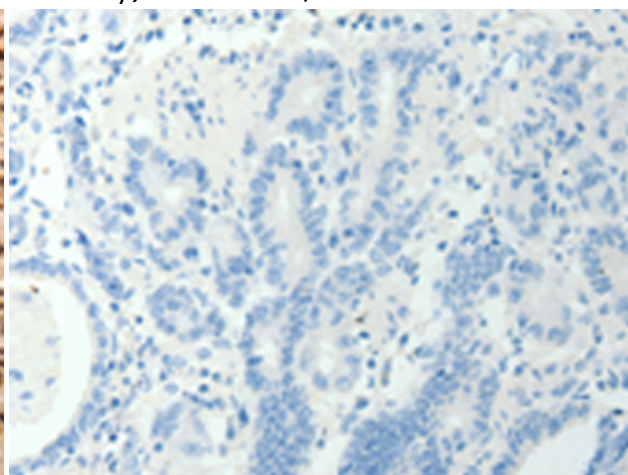
Immunohistochemistry analysis of paraffin embedded Human colon cancer tissue using 213487(E2F7 Antibody) at a dilution of 1/60(Cytoplasm, Nucleus).



In comparison with the IHC on the left, the same paraffin-embedded Human colon cancer tissue is first treated with the synthetic peptide and then with 213487(Anti-E2F7 Antibody) at dilution 1/60.



The image on the left is immunohistochemistry of paraffin-embedded Human gastric cancer tissue using 213487(Anti-E2F7 Antibody) at a dilution of 1/60.



In comparison with the IHC on the left, the same paraffin-embedded Human gastric cancer tissue is first treated with synthetic peptide and then with D160278(Anti-E2F7 Antibody) at dilution 1/60.