

E CADHERIN RABBIT PAB

Cat.#: N225358

Product Name: Anti-E Cadherin Rabbit pAb

Synonyms: CDH1; CDHE; UVO; Cadherin-1; CAM 120/80; Epithelial cadherin; E-cadherin; Uvomorulin; CD antigen CD324

UNIPROT ID: P12830

Background: CDH1 a single-pass type I membrane protein, and calcium dependent cell adhesion proteins. It is a ligand for integrin alpha-E/beta-7, and it colocalizes with DLG7 at sites of cell-cell contact in intestinal epithelial cells.

Immunogen: The antiserum was produced against synthesized peptide derived from human Cadherin. AA range:833-882

Applications: WB,IHC-F,IHC-P,ICC/IF,ELISA

Recommended Dilutions: WB: 1/500-1/1000 IHC: 1/50-1/100 IF: 1/50-1/200
ELISA: 1/10000

Host Species: Rabbit

Clonality: Rabbit Polyclonal

Clone ID: -

MW: Calculated MW: 97 kDa; Observed MW: 125-130 kDa

Isotype: IgG

Purification: Affinity Purified

Species Reactivity: Human,Mouse,Rat

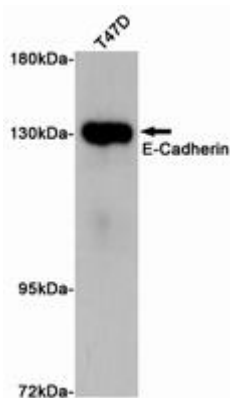
Conjugation: Unconjugated

Modification: Unmodified

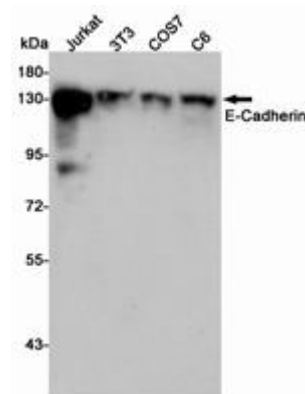
Constituents: PBS (without Mg²⁺ and Ca²⁺), pH 7.3 containing 50% glycerol, 0.5% BSA and 0.02% sodium azide

Research Areas: Signal Transduction

Storage & Shipping: Store at -20°C. Avoid repeated freezing and thawing



Western blot analysis of E-Cadherin in T47D lysates using ECadherin antibody.



Western blot analysis of ECadherin in Jurkat, 3T3, COS7 and C6 lysates using ECadherin antibody.