

## DYNEIN LIGHT CHAIN TCTEX TYPE 1 RABBIT MAB

**Cat.#:** N263573

**Product Name:** Anti-Dynein Light Chain Tctex Type 1 Rabbit Monoclonal Antibody

**Synonyms:** CW-1; TCTEL1; tctex-1

**UNIPROT ID:** P63172

**Background:** This gene encodes a component of the motor complex, cytoplasmic dynein, which transports cellular cargo along microtubules in the cell. The encoded protein regulates the length of primary cilia which are sensory organelles found on the surface of cells. The protein encoded by this gene interacts with viral proteins, like the minor capsid protein L2 of human papillomavirus, and is required for dynein-mediated delivery of the viral nucleic acid to the host nucleus. This protein interacts with oncogenic nucleoporins to disrupt gene regulation and cause leukemic transformation. Pseudogenes of this gene are present on chromosomes 4 and 17. Alternative splicing results in multiple transcript variants encoding different isoforms.

**Immunogen:** Recombinant protein of human TCTEX-1

**Applications:** WB,IHC-F,IHC-P,ICC/IF,IP

**Recommended Dilutions:** WB: 1/500-1/1000 IHC: 1/50-1/100 IF: 1/50-1/200 IP: 1/20

**Host Species:** Rabbit

**Clonality:** Rabbit Monoclonal

**Clone ID:** R03-6F2

**MW:** Calculated MW: 12 kDa; Observed MW: 12 kDa

**Isotype:** IgG

**Purification:** Affinity Purified

**Species Reactivity:** Human,Mouse,Rat

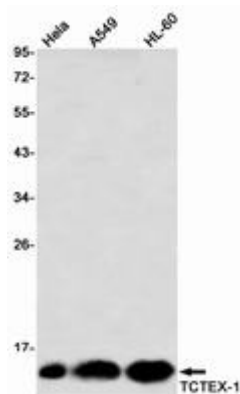
**Conjugation:** Unconjugated

**Modification:** Unmodified

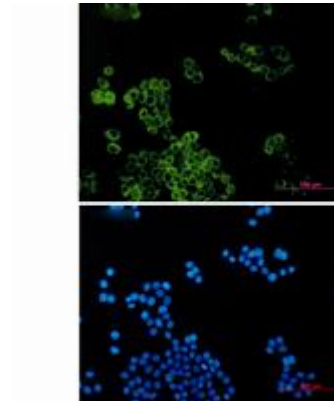
**Constituents:** PBS (without Mg<sup>2+</sup> and Ca<sup>2+</sup>), pH 7.3 containing 50% glycerol, 0.5% BSA and 0.02% sodium azide

**Research Areas:** Microbiology

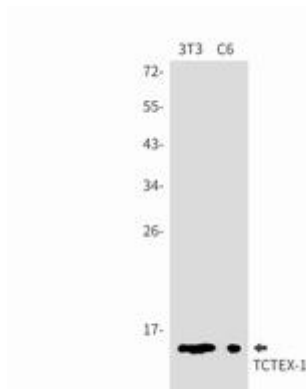
**Storage & Shipping:** Store at -20°C. Avoid repeated freezing and thawing



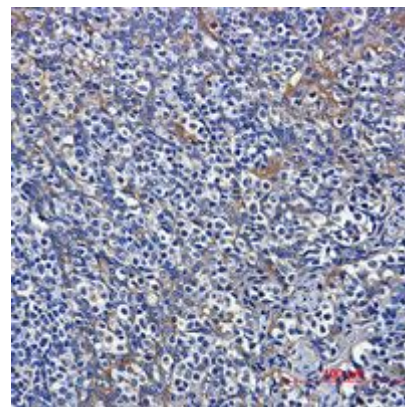
Western blot analysis of TCTEX1 in HeLa, A549, HL-60 lysates using TCTEX1 antibody



Immunocytochemistry analysis of Dynein Light Chain Tctex Type 1 (green) in HeLa using Dynein Light Chain Tctex Type 1 antibody, and DAPI (blue).



Western blot analysis of TCTEX1 in 3T3, C6 lysates using TCTEX1 antibody.



Immunohistochemistry analysis of paraffin-embedded Human tonsil using TCTEX1 antibody. High-pressure and temperature Sodium Citrate pH 6.0 was used for antigen retrieval.