

## DYNC1L1 RABBIT PAB

**Cat.#:** S218570

**Product Name:** Anti-DYNC1L1 Rabbit Polyclonal Antibody

**Synonyms:** LIC1; DLC-A; DNCL1

**UNIPROT ID:** Q9Y6G9 (Gene Accession - BC131620 )

**Background:** The protein encoded by this gene belongs to light intermediate subunit family, whose members are components of the multiprotein cytoplasmic dynein complex which is involved in intracellular trafficking and chromosome segregation during mitosis. The protein plays a role in moving the spindle assembly checkpoint (SAC) from kinetochores to spindle poles. The protein may also mediate binding to other cargo molecules to facilitate intracellular vesicle trafficking.

**Immunogen:** Fusion protein of human DYNC1L1

**Applications:** ELISA, IHC

**Recommended Dilutions:** IHC: 25-100; ELISA: 5000-10000

**Host Species:** Rabbit

**Clonality:** Rabbit Polyclonal

**Isotype:** Immunogen-specific rabbit IgG

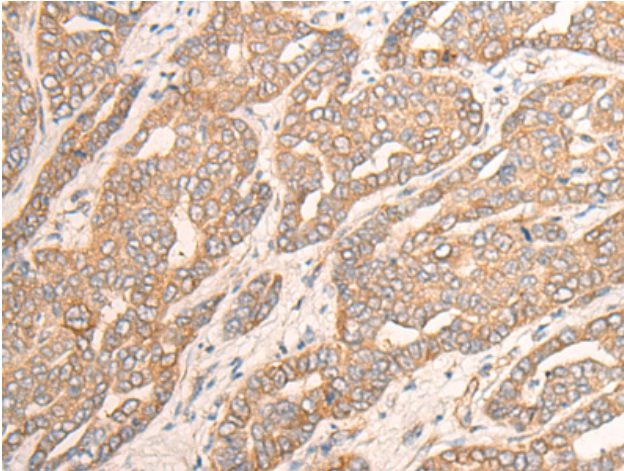
**Purification:** Antigen affinity purification

**Species Reactivity:** Human, Mouse, Rat

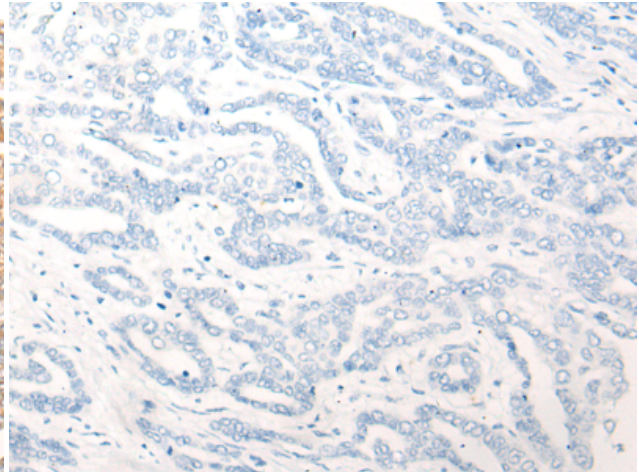
**Constituents:** PBS (without Mg<sup>2+</sup> and Ca<sup>2+</sup>), pH 7.4, 150 mM NaCl, 0.05% Sodium Azide and 40% glycerol

**Research Areas:** Signal Transduction, Epigenetics and Nuclear Signaling

**Storage & Shipping:** Store at -20°C. Avoid repeated freezing and thawing



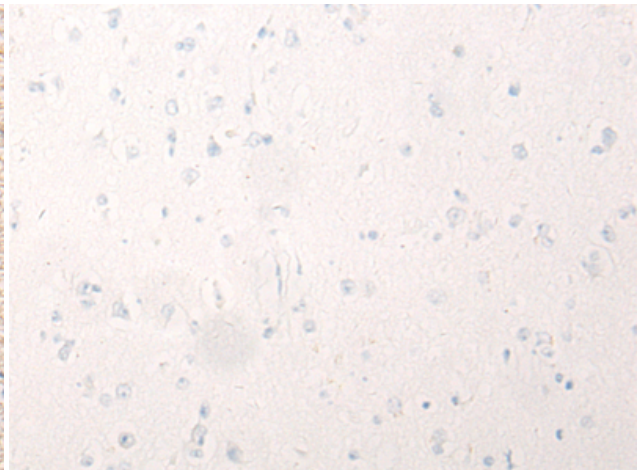
Immunohistochemistry analysis of paraffin embedded Human liver cancer tissue using 218570(DYNC1L1 Antibody) at a dilution of 1/25(Cytoplasm).



In comparison with the IHC on the left, the same paraffin-embedded Human liver cancer tissue is first treated with the fusion protein and then with 218570(Anti-DYNC1L1 Antibody) at dilution 1/25.



The image on the left is immunohistochemistry of paraffin-embedded Human brain tissue using 218570(Anti-DYNC1L1 Antibody) at a dilution of 1/25.



In comparison with the IHC on the left, the same paraffin-embedded Human brain tissue is first treated with fusion protein and then with D224721(Anti-DYNC1L1 Antibody) at dilution 1/25.