

## DYNAP RABBIT PAB

**Cat.#:** S221645

**Product Name:** Anti-DYNAP Rabbit Polyclonal Antibody

**Synonyms:** C18orf26

**UNIPROT ID:** Q8N1N2 (Gene Accession - NP\_775900 )

**Background:** Plays a role in the regulation of cell proliferation. Promotes activation of the AKT1 signaling pathway. Promotes phosphorylation of AKT1 at 'Ser-473'.

**Immunogen:** Synthetic peptide of human DYNAP

**Applications:** ELISA, IHC

**Recommended Dilutions:** IHC: 30-150; ELISA: 5000-10000

**Host Species:** Rabbit

**Clonality:** Rabbit Polyclonal

**Isotype:** Immunogen-specific rabbit IgG

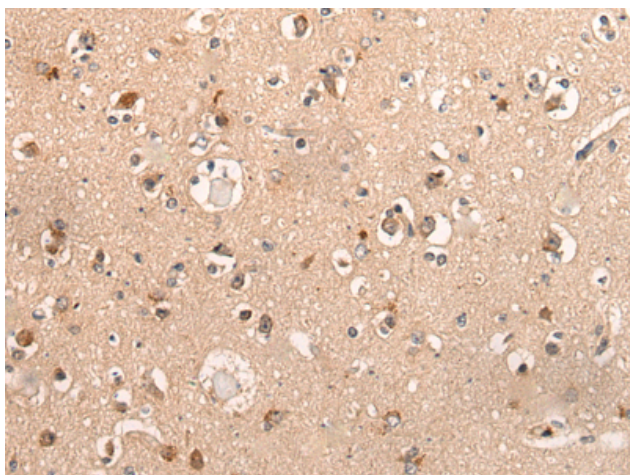
**Purification:** Antigen affinity purification

**Species Reactivity:** Human

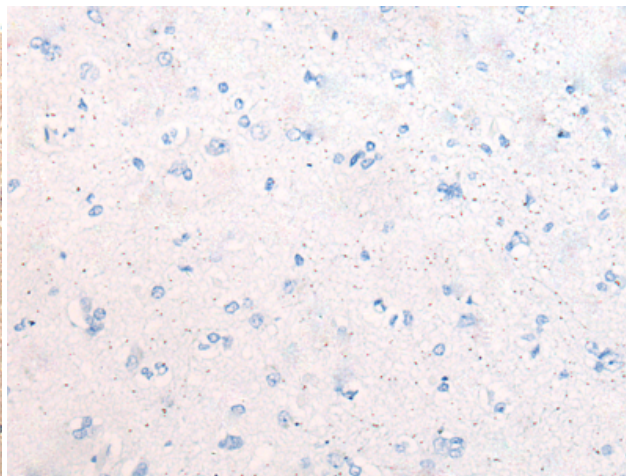
**Constituents:** PBS (without Mg<sup>2+</sup> and Ca<sup>2+</sup>), pH 7.4, 150 mM NaCl, 0.05% Sodium Azide and 40% glycerol

**Research Areas:** Cell Biology

**Storage & Shipping:** Store at -20°C. Avoid repeated freezing and thawing



Immunohistochemistry analysis of paraffin embedded Human brain tissue using 221645(DYNAP Antibody) at a dilution of 1/50(Cytoplasm).



In comparison with the IHC on the left, the same paraffin-embedded Human brain tissue is first treated with the synthetic peptide and then with 221645(Anti-DYNAP Antibody) at dilution 1/50.