

## DYDC2 RABBIT PAB

**Cat.#:** S218162

**Product Name:** Anti-DYDC2 Rabbit Polyclonal Antibody

**Synonyms:**

**UNIPROT ID:** Q96IM9 (Gene Accession - BC007374 )

**Background:** This gene encodes a member of a family of proteins that contains a DPY30 domain. This gene locus overlaps with a closely related gene on the opposite strand. Alternative splicing results in multiple transcript variants. [provided by RefSeq, Jun 2012]

**Immunogen:** Fusion protein of human DYDC2

**Applications:** ELISA, IHC

**Recommended Dilutions:** IHC: 150-300; ELISA: 5000-10000

**Host Species:** Rabbit

**Clonality:** Rabbit Polyclonal

**Isotype:** Immunogen-specific rabbit IgG

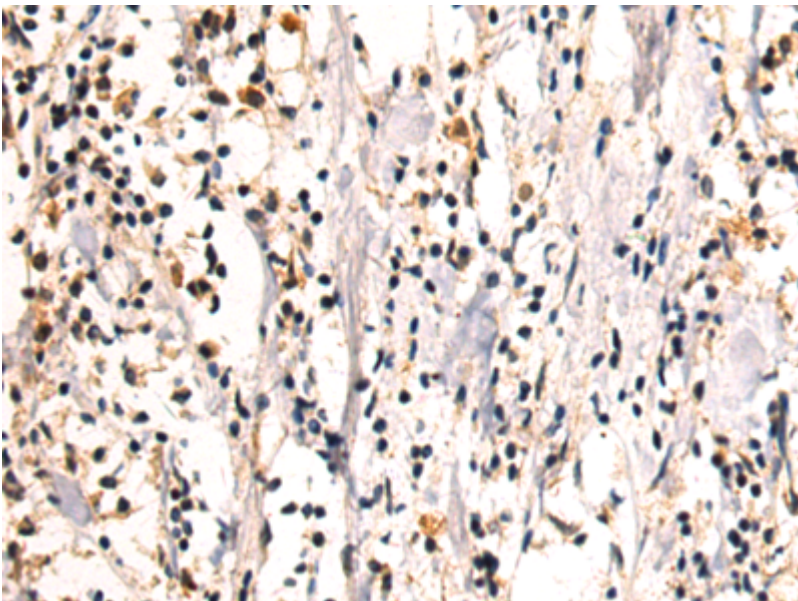
**Purification:** Antigen affinity purification

**Species Reactivity:** Human

**Constituents:** PBS (without Mg<sup>2+</sup> and Ca<sup>2+</sup>), pH 7.4, 150 mM NaCl, 0.05% Sodium Azide and 40% glycerol

**Research Areas:** Epigenetics and Nuclear Signaling

**Storage & Shipping:** Store at -20°C. Avoid repeated freezing and thawing



Immunohistochemistry analysis of paraffin-embedded Human breast cancer tissue using 218162(DYDC2 Antibody) at a dilution of 1/225(Nucleus).



# Product Description

Pioneering GTPase and Oncogene Product Development since 2010

---