

DUS2 RABBIT PAB

Cat.#: S218741

Product Name: Anti-DUS2 Rabbit Polyclonal Antibody

Synonyms: SMM1; DUS2L; URLC8

UNIPROT ID: Q9NX74 (Gene Accession - BC006527)

Background: This gene encodes a cytoplasmic protein that catalyzes the conversion of uridine residues to dihydrouridine in the D-loop of tRNA. The resulting modified bases confer enhanced regional flexibility to tRNA. The encoded protein may increase the rate of translation by inhibiting an interferon-induced protein kinase. This gene has been implicated in pulmonary carcinogenesis. Alternatively spliced transcript variants have been described for this gene.

Immunogen: Fusion protein of human DUS2

Applications: ELISA, WB, IHC

Recommended Dilutions: IHC: 30-150;WB: 200-1000;ELISA: 5000-10000

Host Species: Rabbit

Clonality: Rabbit Polyclonal

Isotype: Immunogen-specific rabbit IgG

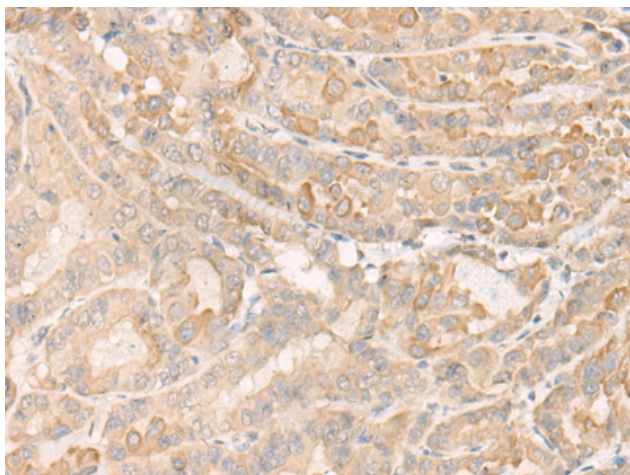
Purification: Antigen affinity purification

Species Reactivity: Human, Mouse

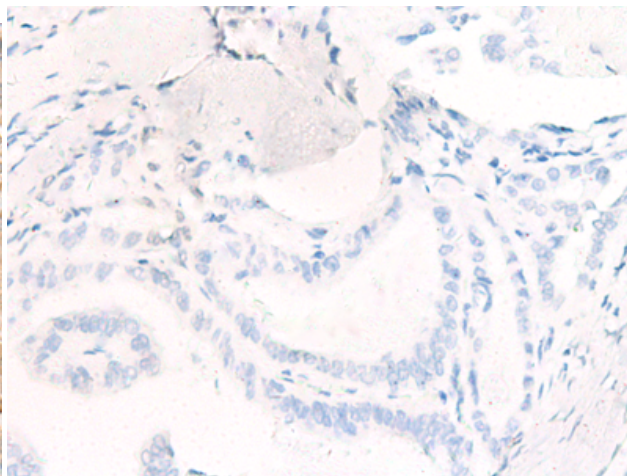
Constituents: PBS (without Mg²⁺ and Ca²⁺), pH 7.4, 150 mM NaCl, 0.05% Sodium Azide and 40% glycerol

Research Areas: Epigenetics and Nuclear Signaling

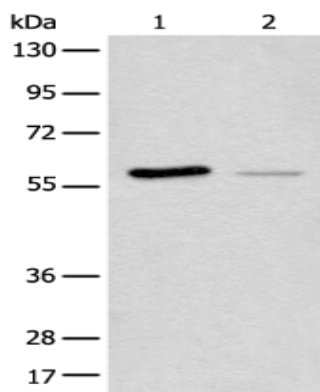
Storage & Shipping: Store at -20°C. Avoid repeated freezing and thawing



Immunohistochemistry analysis of paraffin embedded Human thyroid cancer tissue using 218741(DUS2 Antibody) at a dilution of 1/20(Cytoplasm).



In comparison with the IHC on the left, the same paraffin-embedded Human thyroid cancer tissue is first treated with the fusion protein and then with 218741(Anti-DUS2 Antibody) at dilution 1/20.



Gel: 8%SDS-PAGE, Lysate: 40 μ g;
Lane 1-2: HEPG2 cell and Human Bladder transitional cell carcinoma grade 2-3 tissue lysates ;
Primary antibody: 218741(DUS2 Antibody) at dilution 1/200;
Secondary antibody: Goat anti rabbit IgG at 1/8000 dilution;
Exposure time: 5 seconds