

## DSCC1 RABBIT PAB

**Cat.#:** S221579

**Product Name:** Anti-DSCC1 Rabbit Polyclonal Antibody

**Synonyms:** DCC1

**UNIPROT ID:** Q9BVC3 (Gene Accession - NP\_076999 )

**Background:** CHTF18 (MIM 613201), CHTF8 (MIM 613202), and DSCC1 are components of an alternative replication factor C (RFC) (see MIM 600404) complex that loads PCNA (MIM 176740) onto DNA during S phase of the cell cycle.

**Immunogen:** Synthetic peptide of human DSCC1

**Applications:** ELISA, WB, IHC

**Recommended Dilutions:** IHC: 50-200;WB: 500-2000;ELISA: 5000-10000

**Host Species:** Rabbit

**Clonality:** Rabbit Polyclonal

**Isotype:** Immunogen-specific rabbit IgG

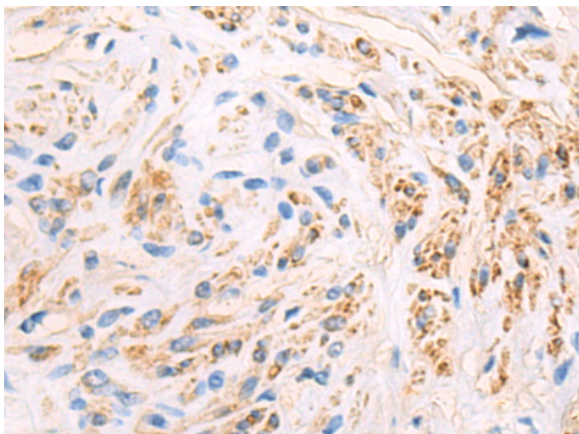
**Purification:** Antigen affinity purification

**Species Reactivity:** Human, Mouse

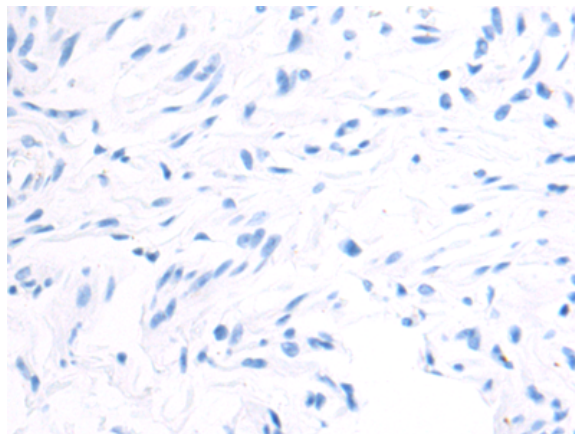
**Constituents:** PBS (without Mg<sup>2+</sup> and Ca<sup>2+</sup>), pH 7.4, 150 mM NaCl, 0.05% Sodium Azide and 40% glycerol

**Research Areas:** Epigenetics and Nuclear Signaling, Cancer

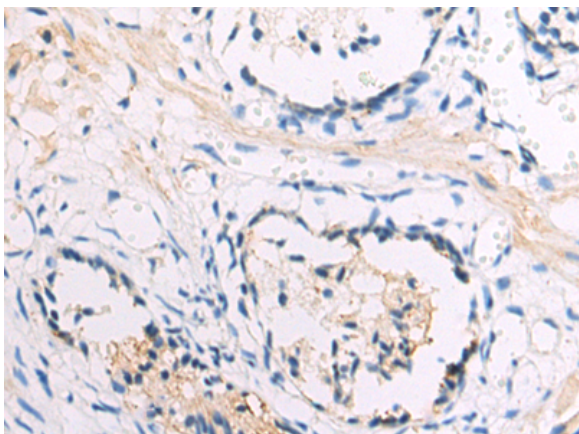
**Storage & Shipping:** Store at -20°C. Avoid repeated freezing and thawing



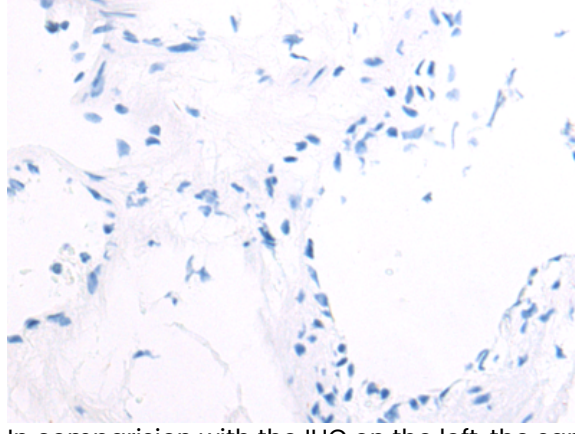
Immunohistochemistry analysis of paraffin embedded Human cervical cancer tissue using 221579(DSCC1 Antibody) at a dilution of 1/50(Cytoplasm).



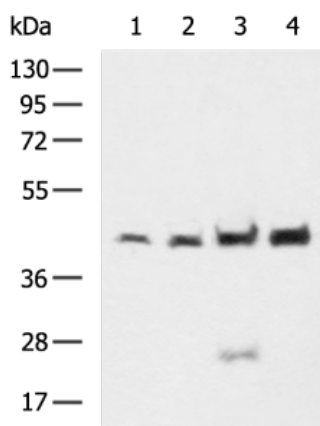
In comparison with the IHC on the left, the same paraffin-embedded Human cervical cancer tissue is first treated with the synthetic peptide and then with 221579(Anti-DSCC1 Antibody) at dilution 1/50.



The image on the left is immunohistochemistry of paraffin-embedded Human prostate cancer tissue using 221579(Anti-DSCC1 Antibody) at a dilution of 1/50.



In comparison with the IHC on the left, the same paraffin-embedded Human prostate cancer tissue is first treated with synthetic peptide and then with D263226(Anti-DSCC1 Antibody) at dilution 1/50.



Gel: 8%SDS-PAGE, Lysate: 40 µg;  
Lane 1-4: Mouse placenta tissue, Raji, 231, RAMOS cell lysates;  
Primary antibody: 221579(DSCC1 Antibody) at dilution 1/700;  
Secondary antibody: HRP-conjugated Goat anti rabbit IgG at 1/5000 dilution;  
Exposure time: 90 seconds



# Product Description

Pioneering GTPase and Oncogene Product Development since 2010

---