

DRD4 RABBIT PAB

Cat.#: S219734

Product Name: Anti-DRD4 Rabbit Polyclonal Antibody

Synonyms: D4DR

UNIPROT ID: P21917 (Gene Accession - NP_000788)

Background: This gene encodes the D4 subtype of the dopamine receptor. The D4 subtype is a G-protein coupled receptor which inhibits adenylyl cyclase. It is a target for drugs which treat schizophrenia and Parkinson disease. Mutations in this gene have been associated with various behavioral phenotypes, including autonomic nervous system dysfunction, attention deficit/hyperactivity disorder, and the personality trait of novelty seeking. This gene contains a polymorphic number (2-10 copies) of tandem 48 nt repeats; the sequence shown contains four repeats.

Immunogen: Synthetic peptide of human DRD4

Applications: ELISA, WB, IHC

Recommended Dilutions: IHC: 20-May;WB: 500-1000;ELISA: 500-5000

Host Species: Rabbit

Clonality: Rabbit Polyclonal

Isotype: Immunogen-specific rabbit IgG

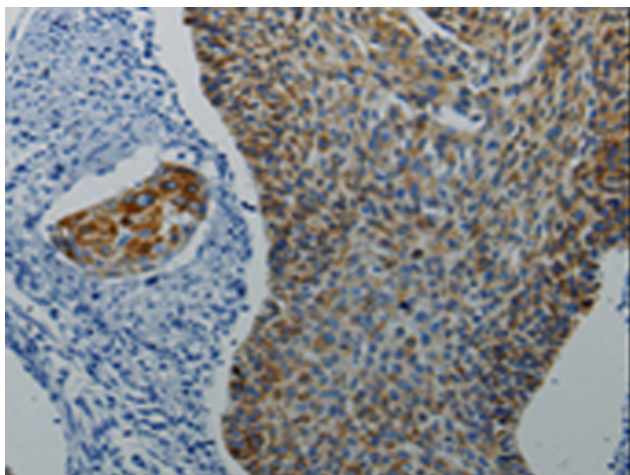
Purification: Antigen affinity purification

Species Reactivity: Human, Mouse

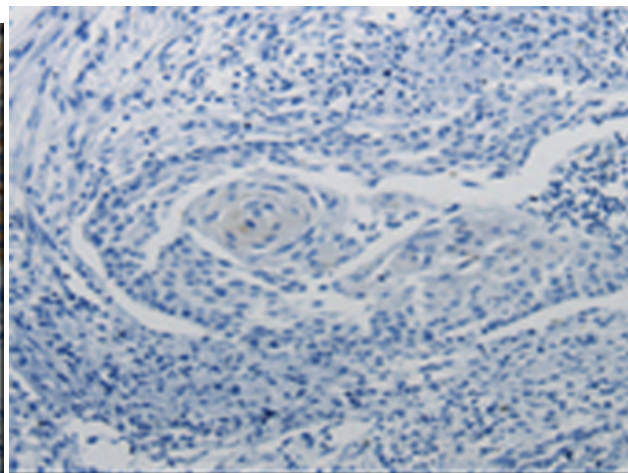
Constituents: PBS (without Mg²⁺ and Ca²⁺), pH 7.4, 150 mM NaCl, 0.05% Sodium Azide and 40% glycerol

Research Areas: Neuroscience

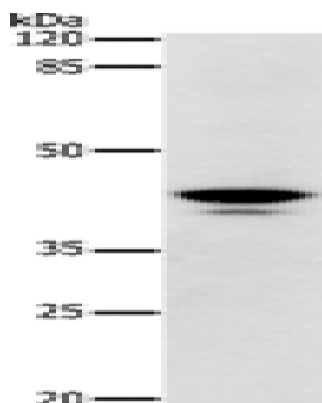
Storage & Shipping: Store at -20°C. Avoid repeated freezing and thawing



Immunohistochemistry analysis of paraffin embedded Human cervical cancer tissue using 219734(DRD4 Antibody) at a dilution of 1/5(Cytoplasm, Cell membrane).



In comparison with the IHC on the left, the same paraffin-embedded Human cervical cancer tissue is first treated with the synthetic peptide and then with 219734(Anti-DRD4 Antibody) at dilution 1/5.



Gel: 10%SDS-PAGE, Lysate: 30 µg;
Lane: Mouse skeletal muscle tissue;
Primary antibody: 219734(DRD4 Antibody) at dilution 1/350;
Secondary antibody: Goat anti rabbit IgG at 1/8000 dilution;
Exposure time: 1 minute