

## DPYSL4 RABBIT PAB

**Cat.#:** S213449

**Product Name:** Anti-DPYSL4 Rabbit Polyclonal Antibody

**Synonyms:** CRMP3, DRP-4, ULIP4

**UNIPROT ID:** O14531 (Gene Accession - NP\_006417 )

**Background:** Collapsin response mediator protein 3 is an enzyme that in humans is encoded by the CRMP3 gene. It is necessary for signaling by class 3 semaphorins and subsequent remodeling of the cytoskeleton. And plays a role in axon guidance, neuronal growth cone collapse and cell migration. Homotetramer, and heterotetramer with CRMP1, DPYSL2, DPYSL3 or DPYSL5. Interacts with PLEXA1. Phosphorylated upon DNA damage, probably by ATM or ATR.

**Immunogen:** Synthetic peptide of human DPYSL4

**Applications:** ELISA, WB, IHC

**Recommended Dilutions:** IHC: 25-100; WB: 500-1000; ELISA: 1000-5000

**Host Species:** Rabbit

**Clonality:** Rabbit Polyclonal

**Isotype:** Immunogen-specific rabbit IgG

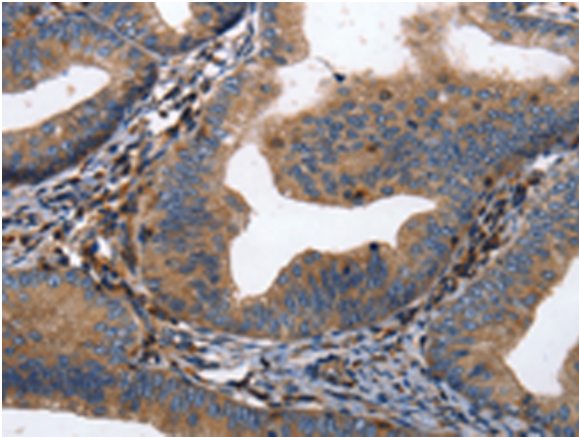
**Purification:** Antigen affinity purification

**Species Reactivity:** Human, Mouse, Rat

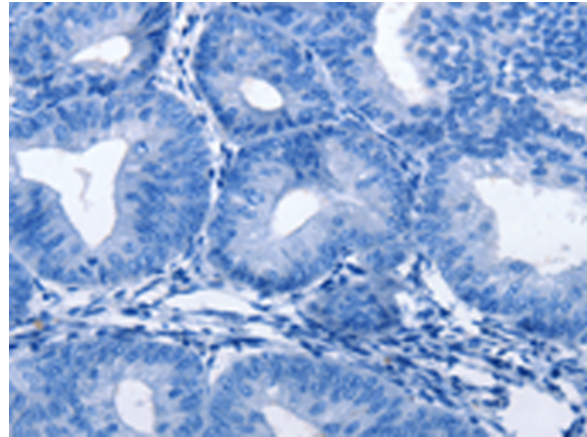
**Constituents:** PBS (without Mg<sup>2+</sup> and Ca<sup>2+</sup>), pH 7.4, 150 mM NaCl, 0.05% Sodium Azide and 40% glycerol

**Research Areas:** Neuroscience

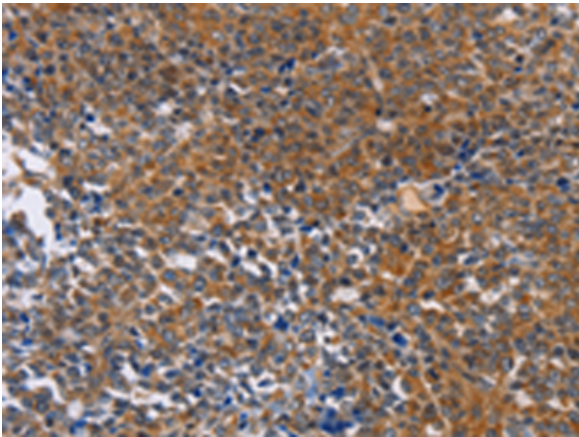
**Storage & Shipping:** Store at -20°C. Avoid repeated freezing and thawing



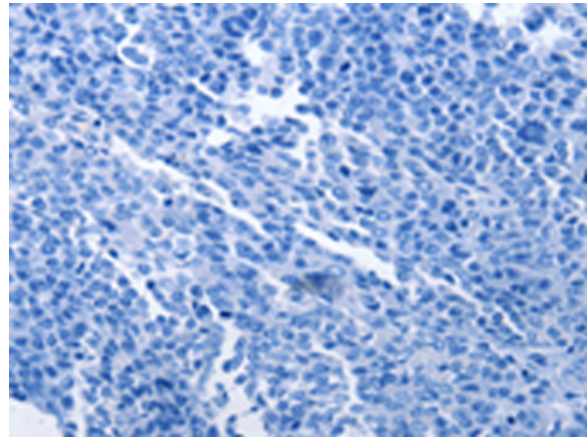
Immunohistochemistry analysis of paraffin embedded Human cervical cancer tissue using 213449(DPYSL4 Antibody) at a dilution of 1/15(Cytoplasm ).



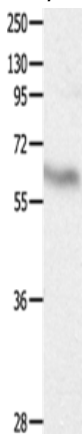
In comparison with the IHC on the left, the same paraffin-embedded Human cervical cancer tissue is first treated with the synthetic peptide and then with 213449(Anti-DPYSL4 Antibody) at dilution 1/15.



The image on the left is immunohistochemistry of paraffin-embedded Human ovarian cancer tissue using 213449(Anti-DPYSL4 Antibody) at a dilution of 1/15.



In comparison with the IHC on the left, the same paraffin-embedded Human ovarian cancer tissue is first treated with synthetic peptide and then with D160205(Anti-DPYSL4 Antibody) at dilution 1/15.



Gel: 8%SDS-PAGE, Lysate: 30 µg;  
Lane: Human fetal brain tissue;  
Primary antibody: 213449(DPYSL4 Antibody) at dilution 1/500;  
Secondary antibody: Goat anti rabbit IgG at 1/8000 dilution;  
Exposure time: 20 seconds



# Product Description

Pioneering GTPase and Oncogene Product Development since 2010

---