

DPYSL3 RABBIT PAB

Cat.#: S219718

Product Name: Anti-DPYSL3 Rabbit Polyclonal Antibody

Synonyms: DRP3; ULIP; CRMP4; DRP-3; LCRMP; CRMP-4; ULIP-1

UNIPROT ID: Q14195 (Gene Accession - NP_001378)

Background: Necessary for signaling by class 3 semaphorins and subsequent remodeling of the cytoskeleton. Plays a role in axon guidance, neuronal growth cone collapse and cell migration.

Immunogen: Synthetic peptide of human DPYSL3

Applications: ELISA, WB, IHC

Recommended Dilutions: IHC: 50-100;WB: 500-2000;ELISA: 5000-10000

Host Species: Rabbit

Clonality: Rabbit Polyclonal

Isotype: Immunogen-specific rabbit IgG

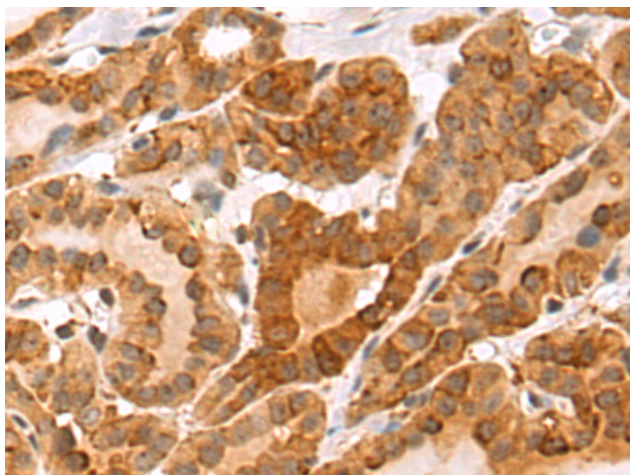
Purification: Antigen affinity purification

Species Reactivity: Human, Mouse, Rat

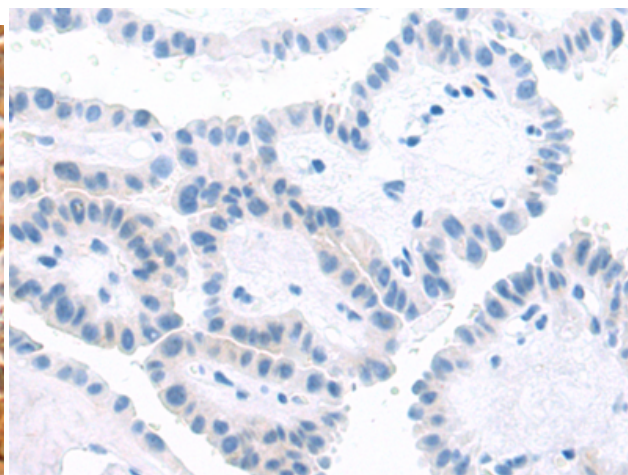
Constituents: PBS (without Mg²⁺ and Ca²⁺), pH 7.4, 150 mM NaCl, 0.05% Sodium Azide and 40% glycerol

Research Areas: Neuroscience

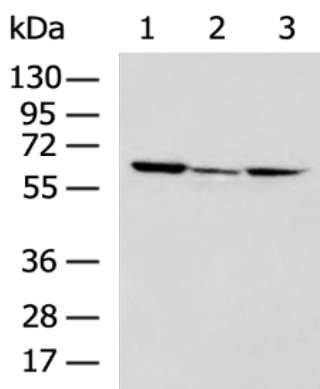
Storage & Shipping: Store at -20°C. Avoid repeated freezing and thawing



Immunohistochemistry analysis of paraffin embedded Human thyroid cancer tissue using 219718(DPYSL3 Antibody) at a dilution of 1/25(Cytoplasm).



In comparison with the IHC on the left, the same paraffin-embedded Human thyroid cancer tissue is first treated with the synthetic peptide and then with 219718(Anti-DPYSL3 Antibody) at dilution 1/25.



Gel: 8%SDS-PAGE, Lysate: 40 µg;

Lane 1-3: Rat brain tissue, Human cerebella tissue, Human cerebrum tissue lysates;

Primary antibody: 219718(DPYSL3 Antibody) at dilution 1/600;

Secondary antibody: HRP-conjugated Goat anti rabbit IgG at 1/5000 dilution;

Exposure time: 1 minute