

DPS1 RABBIT MAB

Cat.#: N262149

Product Name: Anti-DPS1 Rabbit Monoclonal Antibody

Synonyms: Trans-prenyltransferase 1; TPT 1; Solanesyl-diphosphate synthase subunit 1; Decaprenyl-diphosphate synthase subunit 1

UNIPROT ID: Q5T2R2

Background: Decaprenyl-diphosphate synthase subunit 1

Immunogen: A synthetic peptide of human DPS1

Applications: WB,IP

Recommended Dilutions: WB: 1/500-1/1000 IP: 1/20

Host Species: Rabbit

Clonality: Rabbit Monoclonal

Clone ID: R07-2H7

MW: Calculated MW: 46 kDa; Observed MW: 46 kDa

Isotype: IgG

Purification: Affinity Purified

Species Reactivity: Human

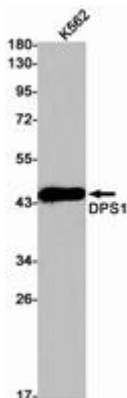
Conjugation: Unconjugated

Modification: Unmodified

Constituents: PBS (without Mg²⁺ and Ca²⁺), pH 7.3 containing 50% glycerol, 0.5% BSA and 0.02% sodium azide

Research Areas: Signal Transduction

Storage & Shipping: Store at -20°C. Avoid repeated freezing and thawing



Western blot analysis of DPS1 in K562 lysates using DPS1 antibody.