

## DPPA4 RABBIT PAB

**Cat.#:** S221327

**Product Name:** Anti-DPPA4 Rabbit Polyclonal Antibody

**Synonyms:** 2410091M23Rik

**UNIPROT ID:** Q7L190 (Gene Accession - NP\_060659)

**Background:** This gene encodes a nuclear factor that is involved in the maintenance of pluripotency in stem cells and essential for embryogenesis. The encoded protein has a scaffold-attachment factor A/B, acinus and PIAS (SAP) domain that binds DNA and is thought to modify chromatin. Mice with a homozygous knockout of the orthologous gene die during late embryonic development or within hours after birth. Knockout embryos are normal in size at embryonic day 18.5 but exhibit skeletal and lung tissue abnormalities. This gene, when mutated, is highly expressed in embryonal carcinomas, pluripotent germ cell tumors, and other cancers and is thought to play an important role in tumor progression. Multiple pseudogenes of this gene have been identified. Alternative splicing results in multiple transcript variants.

**Immunogen:** Synthetic peptide of human DPPA4

**Applications:** ELISA, IHC

**Recommended Dilutions:** IHC: 40–200; ELISA: 5000–10000

**Host Species:** Rabbit

**Clonality:** Rabbit Polyclonal

**Isotype:** Immunogen-specific rabbit IgG

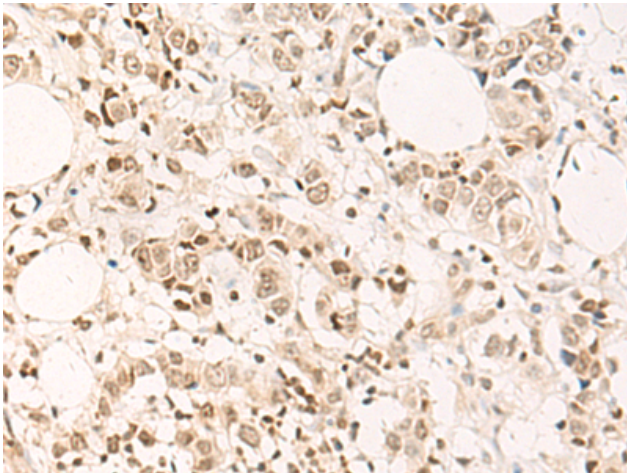
**Purification:** Antigen affinity purification

**Species Reactivity:** Human

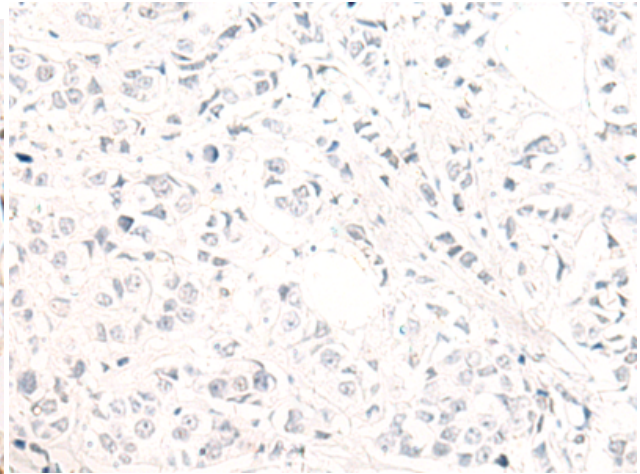
**Constituents:** PBS (without Mg<sup>2+</sup> and Ca<sup>2+</sup>), pH 7.4, 150 mM NaCl, 0.05% Sodium Azide and 40% glycerol

**Research Areas:** Stem Cells, Developmental Biology

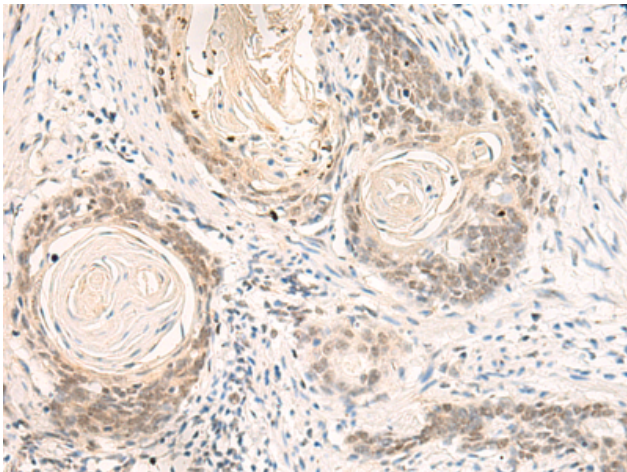
**Storage & Shipping:** Store at –20°C. Avoid repeated freezing and thawing



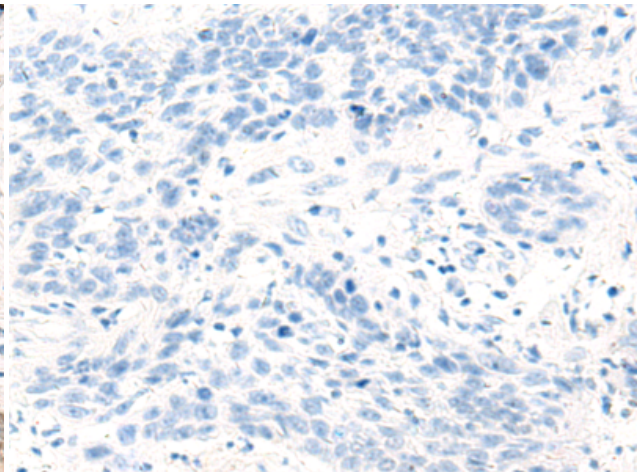
Immunohistochemistry analysis of paraffin embedded Human breast cancer tissue using 221327(DPPA4 Antibody) at a dilution of 1/55(Nucleus).



In comparison with the IHC on the left, the same paraffin-embedded Human breast cancer tissue is first treated with the synthetic peptide and then with 221327(Anti-DPPA4 Antibody) at dilution 1/55.



The image on the left is immunohistochemistry of paraffin-embedded Human esophagus cancer tissue using 221327(Anti-DPPA4 Antibody) at a dilution of 1/55.



In comparison with the IHC on the left, the same paraffin-embedded Human esophagus cancer tissue is first treated with synthetic peptide and then with D262869(Anti-DPPA4 Antibody) at dilution 1/55.