

DPCD RABBIT PAB

Cat.#: S221921

Product Name: Anti-DPCD Rabbit Polyclonal Antibody

Synonyms:

UNIPROT ID: Q9BVM2 (Gene Accession - NP_056263)

Background: This gene in mouse encodes a protein that may be involved in the generation and maintenance of ciliated cells. In mouse, expression of this gene increases during ciliated cell differentiation, and disruption of this gene has been linked to primary ciliary dyskinesia.

Immunogen: Synthetic peptide of human DPCD

Applications: ELISA, IHC

Recommended Dilutions: IHC: 50-100; ELISA: 5000-10000

Host Species: Rabbit

Clonality: Rabbit Polyclonal

Isotype: Immunogen-specific rabbit IgG

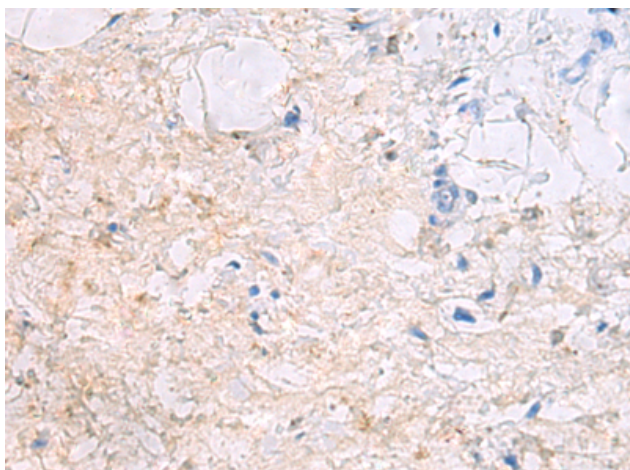
Purification: Antigen affinity purification

Species Reactivity: Human, Mouse, Rat

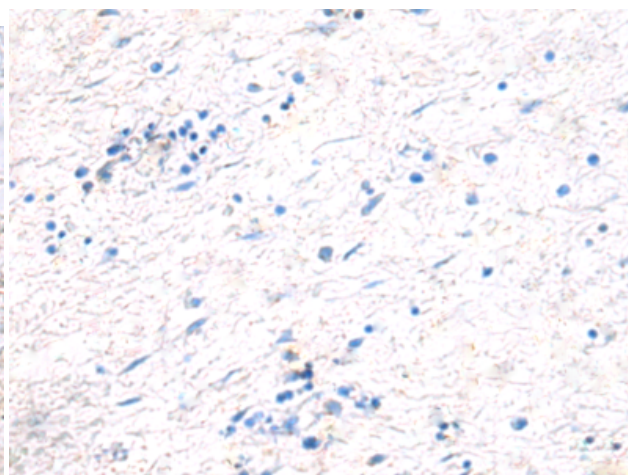
Constituents: PBS (without Mg²⁺ and Ca²⁺), pH 7.4, 150 mM NaCl, 0.05% Sodium Azide and 40% glycerol

Research Areas: Cell Biology

Storage & Shipping: Store at -20°C. Avoid repeated freezing and thawing



Immunohistochemistry analysis of paraffin embedded Human gastric cancer tissue using 221921(DPCD Antibody) at a dilution of 1/50(Cytoplasm).



In comparison with the IHC on the left, the same paraffin-embedded Human gastric cancer tissue is first treated with the synthetic peptide and then with 221921(Anti-DPCD Antibody) at dilution 1/50.