

## DNMT3L RABBIT PAB

**Cat.#:** S216475

**Product Name:** Anti-DNMT3L Rabbit Polyclonal Antibody

**Synonyms:**

**UNIPROT ID:** Q9UJW3 (Gene Accession - BC002560 )

**Background:** CpG methylation is an epigenetic modification that is important for embryonic development, imprinting, and X-chromosome inactivation. Studies in mice have demonstrated that DNA methylation is required for mammalian development. This gene encodes a nuclear protein with similarity to DNA methyltransferases, but is not thought to function as a DNA methyltransferase as it does not contain the amino acid residues necessary for methyltransferase activity. However, it does stimulate de novo methylation by DNA cytosine methyltransferase 3 alpha and is thought to be required for the establishment of maternal genomic imprints. This protein also mediates transcriptional repression through interaction with histone deacetylase 1. Alternatively spliced transcript variants encoding different isoforms have been found for this gene.

**Immunogen:** Fusion protein of human DNMT3L

**Applications:** ELISA, IHC

**Recommended Dilutions:** IHC: Oct-50; ELISA: 1000-2000

**Host Species:** Rabbit

**Clonality:** Rabbit Polyclonal

**Isotype:** Immunogen-specific rabbit IgG

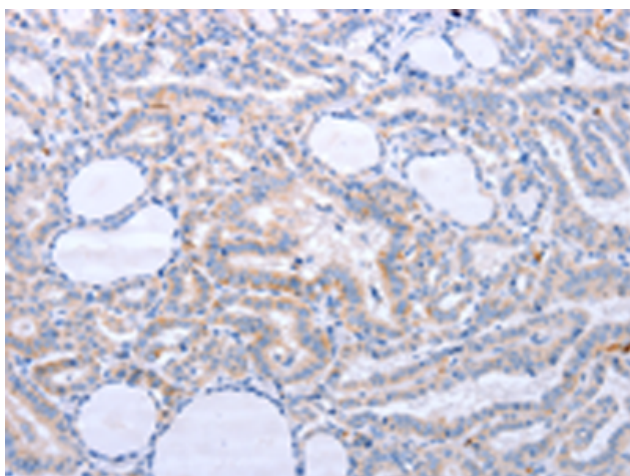
**Purification:** Antigen affinity purification

**Species Reactivity:** Human

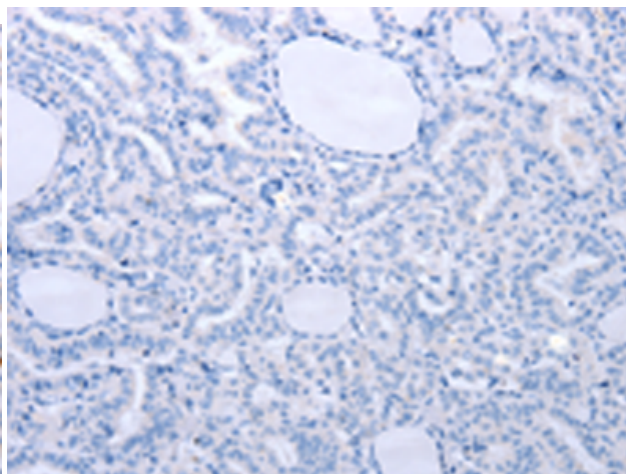
**Constituents:** PBS (without Mg<sup>2+</sup> and Ca<sup>2+</sup>), pH 7.4, 150 mM NaCl, 0.05% Sodium Azide and 40% glycerol

**Research Areas:** Epigenetics and Nuclear Signaling

**Storage & Shipping:** Store at -20°C. Avoid repeated freezing and thawing



Immunohistochemistry analysis of paraffin embedded Human thyroid cancer tissue using 216475 (DNMT3L Antibody) at a dilution of 1/15 (Cytoplasm).



In comparison with the IHC on the left, the same paraffin-embedded Human thyroid cancer tissue is first treated with the fusion protein and then with 216475 (Anti-DNMT3L Antibody) at dilution 1/15.



# Product Description

Pioneering GTPase and Oncogene Product Development since 2010

---