

DNAJC2 RABBIT PAB

Cat.#: S221771

Product Name: Anti-DNAJC2 Rabbit Polyclonal Antibody

Synonyms: ZRF1; ZUO1; MPP11; MPHOSPH11

UNIPROT ID: Q99543 (Gene Accession - NP_055192)

Background: This gene is a member of the M-phase phosphoprotein (MPP) family. The gene encodes a phosphoprotein with a J domain and a Myb DNA-binding domain which localizes to both the nucleus and the cytosol. The protein is capable of forming a heterodimeric complex that associates with ribosomes, acting as a molecular chaperone for nascent polypeptide chains as they exit the ribosome. This protein was identified as a leukemia-associated antigen and expression of the gene is upregulated in leukemic blasts. Also, chromosomal aberrations involving this gene are associated with primary head and neck squamous cell tumors. This gene has a pseudogene on chromosome 6. Alternatively spliced variants which encode different protein isoforms have been described.

Immunogen: Synthetic peptide of human DNAJC2

Applications: ELISA, IHC

Recommended Dilutions: IHC: 25-100; ELISA: 5000-10000

Host Species: Rabbit

Clonality: Rabbit Polyclonal

Isotype: Immunogen-specific rabbit IgG

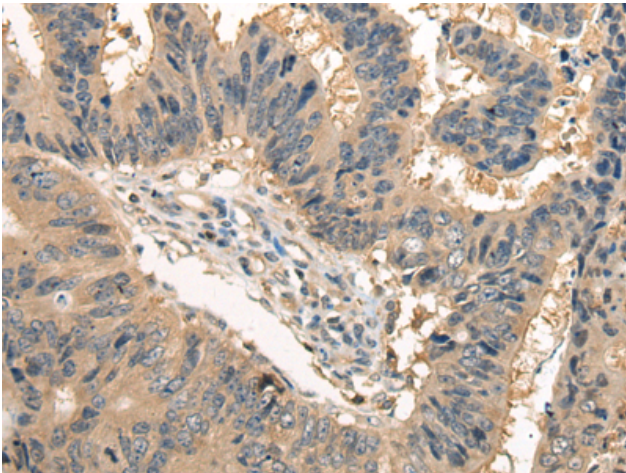
Purification: Antigen affinity purification

Species Reactivity: Human, Mouse, Rat

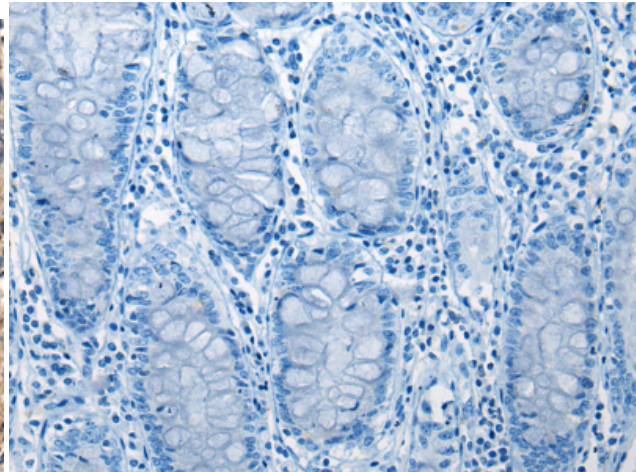
Constituents: PBS (without Mg²⁺ and Ca²⁺), pH 7.4, 150 mM NaCl, 0.05% Sodium Azide and 40% glycerol

Research Areas: Signal Transduction, Cancer

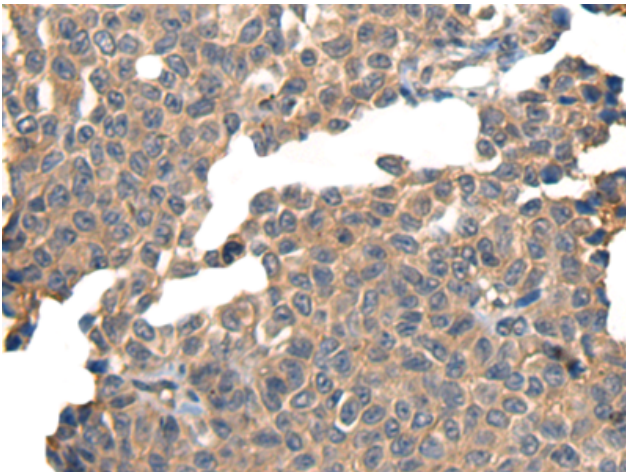
Storage & Shipping: Store at -20°C. Avoid repeated freezing and thawing



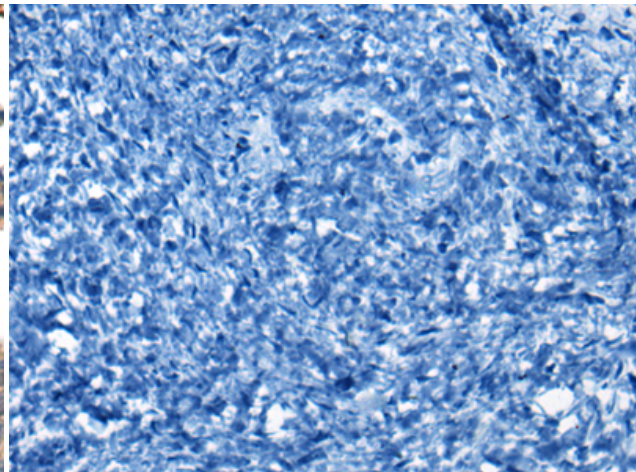
Immunohistochemistry analysis of paraffin embedded Human colorectal cancer tissue using 221771 (DNAJC2 Antibody) at a dilution of 1/35 (Cytoplasm).



In comparison with the IHC on the left, the same paraffin-embedded Human colorectal cancer tissue is first treated with the synthetic peptide and then with 221771 (Anti-DNAJC2 Antibody) at dilution 1/35.



The image on the left is immunohistochemistry of paraffin-embedded Human ovarian cancer tissue using 221771 (Anti-DNAJC2 Antibody) at a dilution of 1/35.



In comparison with the IHC on the left, the same paraffin-embedded Human ovarian cancer tissue is first treated with synthetic peptide and then with D263510 (Anti-DNAJC2 Antibody) at dilution 1/35.