

DNAJB11 RABBIT PAB

Cat.#: S217959

Product Name: Anti-DNAJB11 Rabbit Polyclonal Antibody

Synonyms: DJ9; EDJ; Dj-9; ERj3; PKD6; ABBP2; ERdj3; ERj3p; ABBP-2; UNQ537; PRO1080

UNIPROT ID: Q9UBS4 (Gene Accession - BC001144)

Background: This gene encodes a soluble glycoprotein of the endoplasmic reticulum (ER) lumen that functions as a co-chaperone of binding immunoglobulin protein, a 70 kilodalton heat shock protein chaperone required for the proper folding and assembly of proteins in the ER. The encoded protein contains a highly conserved J domain of about 70 amino acids with a characteristic His-Pro-Asp (HPD) motif and may regulate the activity of binding immunoglobulin protein by stimulating ATPase activity.

Immunogen: Fusion protein of human DNAJB11

Applications: ELISA, WB, IHC

Recommended Dilutions: IHC: 150-300;WB: 1000-5000;ELISA: 5000-10000

Host Species: Rabbit

Clonality: Rabbit Polyclonal

Isotype: Immunogen-specific rabbit IgG

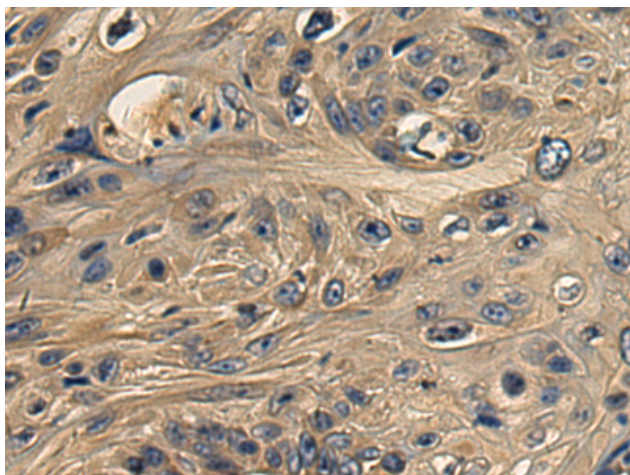
Purification: Antigen affinity purification

Species Reactivity: Human, Mouse, Rat

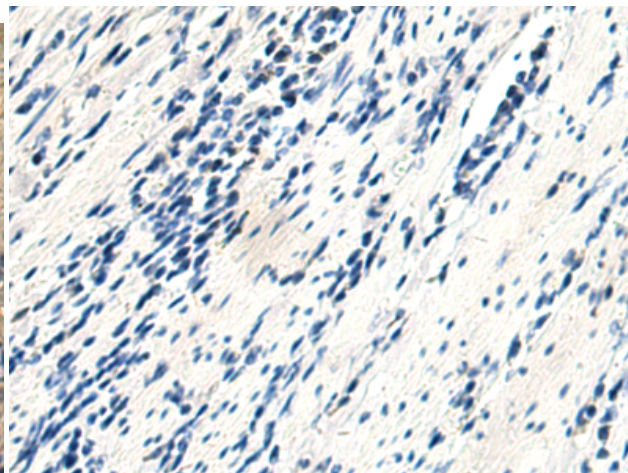
Constituents: PBS (without Mg²⁺ and Ca²⁺), pH 7.4, 150 mM NaCl, 0.05% Sodium Azide and 40% glycerol

Research Areas: Signal Transduction

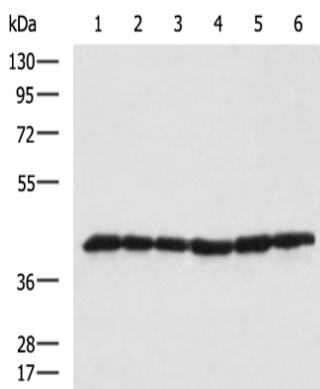
Storage & Shipping: Store at -20°C. Avoid repeated freezing and thawing



Immunohistochemistry analysis of paraffin embedded Human esophagus cancer tissue using 217959 (DNAJB11 Antibody) at a dilution of 1/180 (Cytoplasm).



In comparison with the IHC on the left, the same paraffin-embedded Human esophagus cancer tissue is first treated with the fusion protein and then with 217959 (Anti-DNAJB11 Antibody) at dilution 1/180.



Gel: 8% SDS-PAGE, Lysate: 40 µg;
 Lane 1-6: NIH/3T3, K562, HT-29, 231, HUVEC and HeLa cell lysates;
 Primary antibody: 217959 (DNAJB11 Antibody) at dilution 1/1000;
 Secondary antibody: HRP-conjugated Goat anti rabbit IgG at 1/5000 dilution;
 Exposure time: 15 seconds