

## DMRT3 RABBIT PAB

**Cat.#:** S217366

**Product Name:** Anti-DMRT3 Rabbit Polyclonal Antibody

**Synonyms:** DMRTA3

**UNIPROT ID:** Q9NQL9 (Gene Accession - BC113584)

**Background:** The DMRT (doublesex and mab-3 related transcription factor) genes encode a large family of transcription factors that are related to the Drosophila doublesex proteins. Expressed primarily in the gonads, DMRT proteins contain cysteine-rich DNA-binding motifs and are thought to play an important role in sexual development. DMRT3 (doublesex and mab-3 related transcription factor 3), also known as DMRTA3, is a 472 amino acid protein that contains one DM DNA-binding domain and belongs to the DMRT family. Localized to the nucleus, DMRT3 is expressed specifically in testis and is thought to regulate transcriptional events during early sexual development. The gene encoding DMRT3 maps to human chromosome 9, which houses over 900 genes and comprises nearly 4% of the human genome. Hereditary hemorrhagic telangiectasia, which is characterized by harmful vascular defects, and Familial dysautonomia, are both associated with chromosome 9. Notably, chromosome 9 encompasses the largest interferon family gene cluster.

**Immunogen:** Fusion protein of human DMRT3

**Applications:** ELISA, WB, IHC

**Recommended Dilutions:** IHC: 100-300;WB: 500-2000;ELISA: 2000-5000

**Host Species:** Rabbit

**Clonality:** Rabbit Polyclonal

**Isotype:** Immunogen-specific rabbit IgG

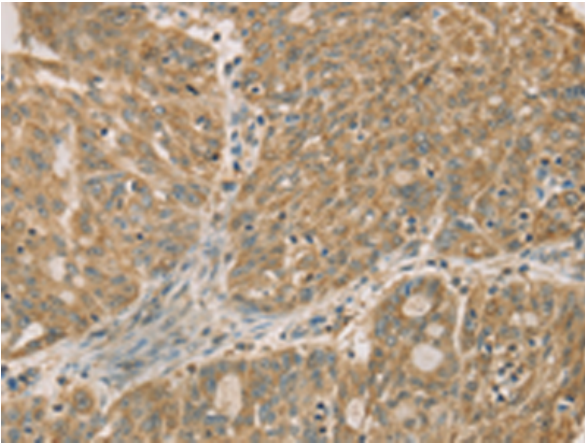
**Purification:** Antigen affinity purification

**Species Reactivity:** Human, Mouse, Rat

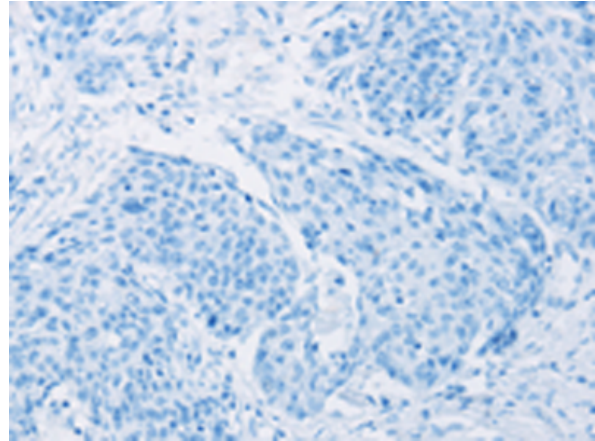
**Constituents:** PBS (without Mg<sup>2+</sup> and Ca<sup>2+</sup>), pH 7.4, 150 mM NaCl, 0.05% Sodium Azide and 40% glycerol

**Research Areas:** Developmental Biology

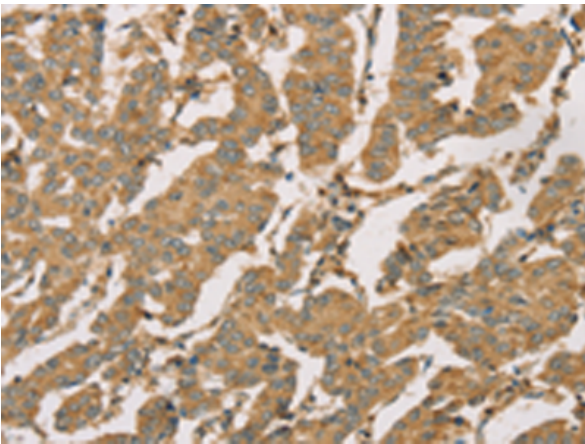
**Storage & Shipping:** Store at -20°C. Avoid repeated freezing and thawing



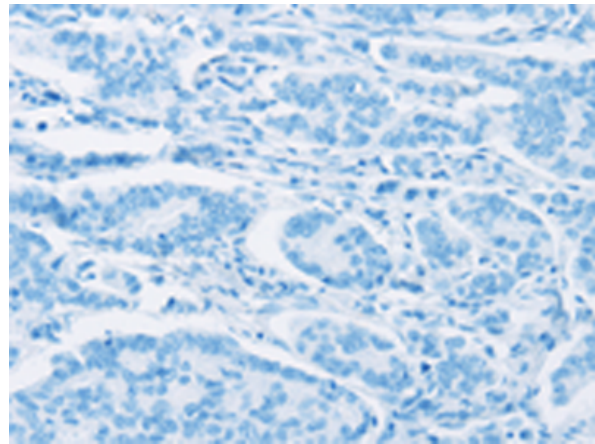
Immunohistochemistry analysis of paraffin embedded Human ovarian cancer tissue using 217366(DMRT3 Antibody) at a dilution of 1/50(Cytoplasm).



In comparison with the IHC on the left, the same paraffin-embedded Human ovarian cancer tissue is first treated with the fusion protein and then with 217366(Anti-DMRT3 Antibody) at dilution 1/50.



The image on the left is immunohistochemistry of paraffin-embedded Human breast cancer tissue using 217366(Anti-DMRT3 Antibody) at a dilution of 1/50.



In comparison with the IHC on the left, the same paraffin-embedded Human breast cancer tissue is first treated with fusion protein and then with D222241(Anti-DMRT3 Antibody) at dilution 1/50.



Gel: 8%SDS-PAGE, Lysate: 40 µg;  
Lane: Human testis tissue;  
Primary antibody: 217366(DMRT3 Antibody) at dilution 1/550;  
Secondary antibody: Goat anti rabbit IgG at 1/8000 dilution;  
Exposure time: 20 seconds



# Product Description

Pioneering GTPase and Oncogene Product Development since 2010

---