

DMAP1 RABBIT PAB

Cat.#: S221910

Product Name: Anti-DMAP1 Rabbit Polyclonal Antibody

Synonyms: EAF2; SWC4; MEAF2; DNMAP1; DNMTAP1

UNIPROT ID: Q9NPF5 (Gene Accession - EAX07050)

Background: This gene encodes a subunit of several, distinct complexes involved in the repression or activation of transcription. The encoded protein can independently repress transcription and is targeted to replication foci throughout S phase by interacting directly with the N-terminus of DNA methyltransferase 1. During late S phase, histone deacetylase 2 is added to this complex providing a means to deacetylate histones in transcriptionally inactive heterochromatin following replication. The encoded protein is also a component of the nucleosome acetyltransferase of H4 complex and interacts with the transcriptional corepressor tumor susceptibility gene 101 and the pro-apoptotic death-associated protein 6, among others. Alternatively spliced transcript variants encoding the same protein have been described.

Immunogen: Synthetic peptide of human DMAP1

Applications: ELISA, WB, IHC

Recommended Dilutions: IHC: 25-100;WB: 200-1000;ELISA: 5000-10000

Host Species: Rabbit

Clonality: Rabbit Polyclonal

Isotype: Immunogen-specific rabbit IgG

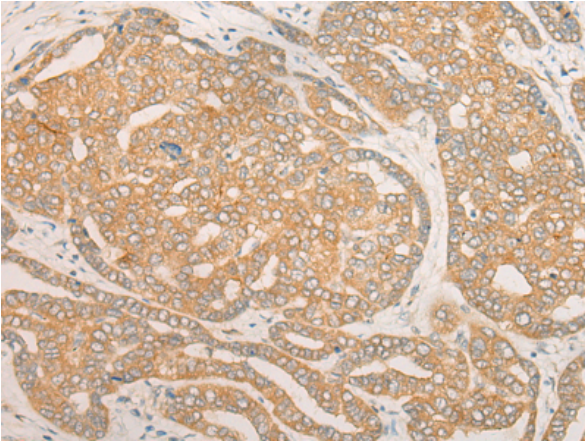
Purification: Antigen affinity purification

Species Reactivity: Human, Mouse

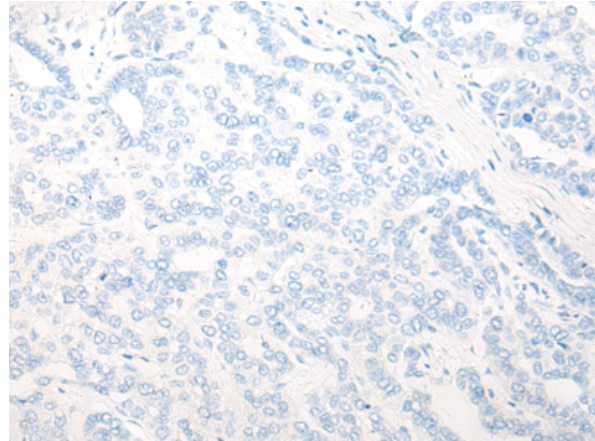
Constituents: PBS (without Mg²⁺ and Ca²⁺), pH 7.4, 150 mM NaCl, 0.05% Sodium Azide and 40% glycerol

Research Areas: Epigenetics and Nuclear Signaling

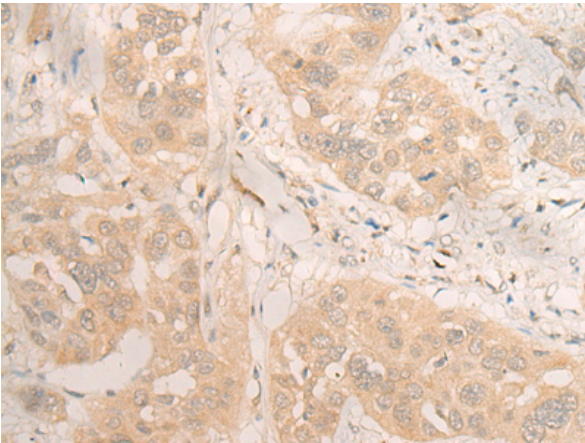
Storage & Shipping: Store at -20°C. Avoid repeated freezing and thawing



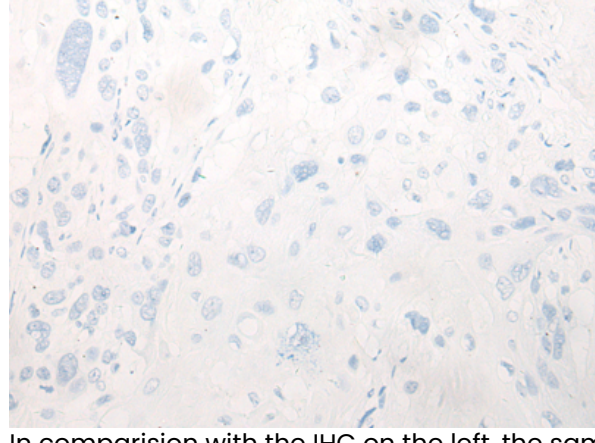
Immunohistochemistry analysis of paraffin embedded Human liver cancer tissue using 221910(DMAP1 Antibody) at a dilution of 1/25(Cytoplasm or Nucleus).



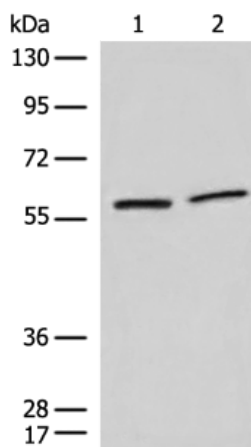
In comparison with the IHC on the left, the same paraffin-embedded Human liver cancer tissue is first treated with the synthetic peptide and then with 221910(Anti-DMAP1 Antibody) at dilution 1/25.



The image on the left is immunohistochemistry of paraffin-embedded Human esophagus cancer tissue using 221910(Anti-DMAP1 Antibody) at a dilution of 1/25.



In comparison with the IHC on the left, the same paraffin-embedded Human esophagus cancer tissue is first treated with synthetic peptide and then with D263722(Anti-DMAP1 Antibody) at dilution 1/25.



Gel: 8%SDS-PAGE, Lysate: 40 µg;
Lane 1-2: RAW and NIH/3T3 cell lysates;
Primary antibody: 221910(DMAP1 Antibody) at dilution 1/350;
Secondary antibody: Goat anti rabbit IgG at 1/8000 dilution;
Exposure time: 5 seconds



Product Description

Pioneering GTPase and Oncogene Product Development since 2010
