

## DLX4 RABBIT MAB

**Cat.#:** N262139

**Product Name:** Anti-DLX4 Rabbit Monoclonal Antibody

**Synonyms:** DLX4; BP1; DLX7; DLX8; DLX9; Homeobox protein DLX-4; Beta protein 1; Homeobox protein DLX-7; Homeobox protein DLX-8

**UNIPROT ID:** Q92988

**Background:** May play a role in determining the production of hemoglobin S. May act as a repressor. During embryonic development, plays a role in palatogenesis.

**Immunogen:** A synthetic peptide of human Dlx4

**Applications:** WB, ICC/IF, IP

**Recommended Dilutions:** WB: 1/500-1/1000 IF: 1/50-1/200 IP: 1/20

**Host Species:** Rabbit

**Clonality:** Rabbit Monoclonal

**Clone ID:** R09-1C5

**MW:** Calculated MW: 26 kDa; Observed MW: 35 kDa

**Isotype:** IgG

**Purification:** Affinity Purified

**Species Reactivity:** Human, Rat

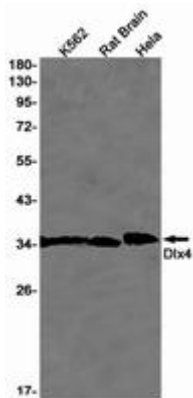
**Conjugation:** Unconjugated

**Modification:** Unmodified

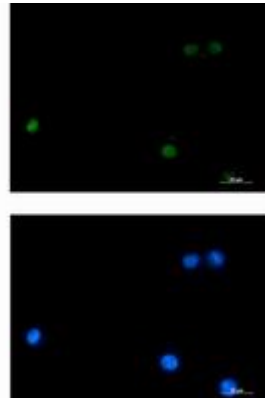
**Constituents:** PBS (without Mg<sup>2+</sup> and Ca<sup>2+</sup>), pH 7.3 containing 50% glycerol, 0.5% BSA and 0.02% sodium azide

**Research Areas:** Epigenetics and Nuclear Signaling

**Storage & Shipping:** Store at -20°C. Avoid repeated freezing and thawing



Western blot analysis of Dlx4 in K562, rat Brain, HeLa lysates using Dlx4 antibody.



Immunocytochemistry analysis of DLX4 (green) in K562 using DLX4 antibody, and DAPI (blue).