

DLK1 RABBIT PAB

Cat.#: S216473

Product Name: Anti-DLK1 Rabbit Polyclonal Antibody

Synonyms: DLK; FA1; ZOG; pG2; DLK-1; PREF1; Delta1; Pref-1

UNIPROT ID: P80370 (Gene Accession - BC007741)

Background: This gene encodes a transmembrane protein that contains multiple epidermal growth factor repeats that functions as a regulator of cell growth. The encoded protein is involved in the differentiation of several cell types including adipocytes. This gene is located in a region of chromosome 14 frequently showing unparental disomy, and is imprinted and expressed from the paternal allele. A single nucleotide variant in this gene is associated with child and adolescent obesity and shows polar overdominance, where heterozygotes carrying an active paternal allele express the phenotype, while mutant homozygotes are normal.

Immunogen: Fusion protein of human DLK1

Applications: ELISA, WB, IHC

Recommended Dilutions: IHC: 25-100;WB: 500-2000;ELISA: 5000-10000

Host Species: Rabbit

Clonality: Rabbit Polyclonal

Isotype: Immunogen-specific rabbit IgG

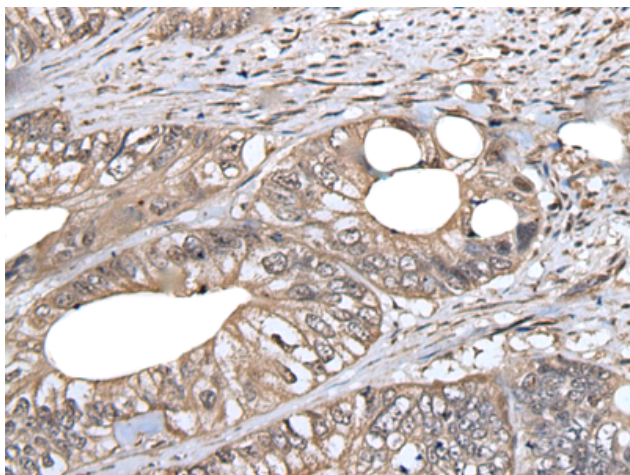
Purification: Antigen affinity purification

Species Reactivity: Human, Mouse

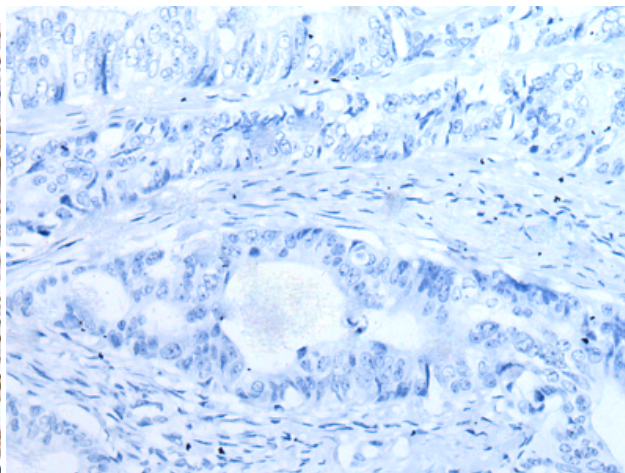
Constituents: PBS (without Mg²⁺ and Ca²⁺), pH 7.4, 150 mM NaCl, 0.05% Sodium Azide and 40% glycerol

Research Areas: Signal Transduction, Neuroscience, Stem Cells

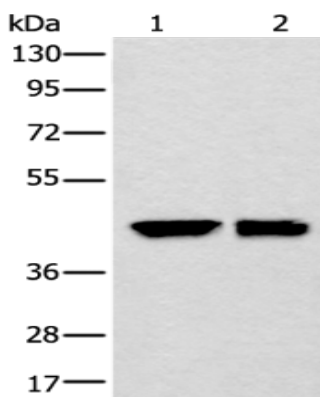
Storage & Shipping: Store at -20°C. Avoid repeated freezing and thawing



Immunohistochemistry analysis of paraffin embedded Human colorectal cancer tissue using 216473(DLK1 Antibody) at a dilution of 1/30(Cell membrane).



In comparison with the IHC on the left, the same paraffin-embedded Human colorectal cancer tissue is first treated with the fusion protein and then with 216473(Anti-DLK1 Antibody) at dilution 1/30.



Gel: 6%SDS-PAGE, Lysate: 40 μ g;
 Lane 1-2: HEPG2 and 231 cell lysates;
 Primary antibody: 216473(DLK1 Antibody) at dilution 1/250;
 Secondary antibody: Goat anti rabbit IgG at 1/8000 dilution;
 Exposure time: 3 seconds